

WAAS CH 53521 W25A	APP CRS 255°	Rwy Idg TDZE 235 Apt Elev 244
--	------------------------	---

RNAV (GPS) RWY 25

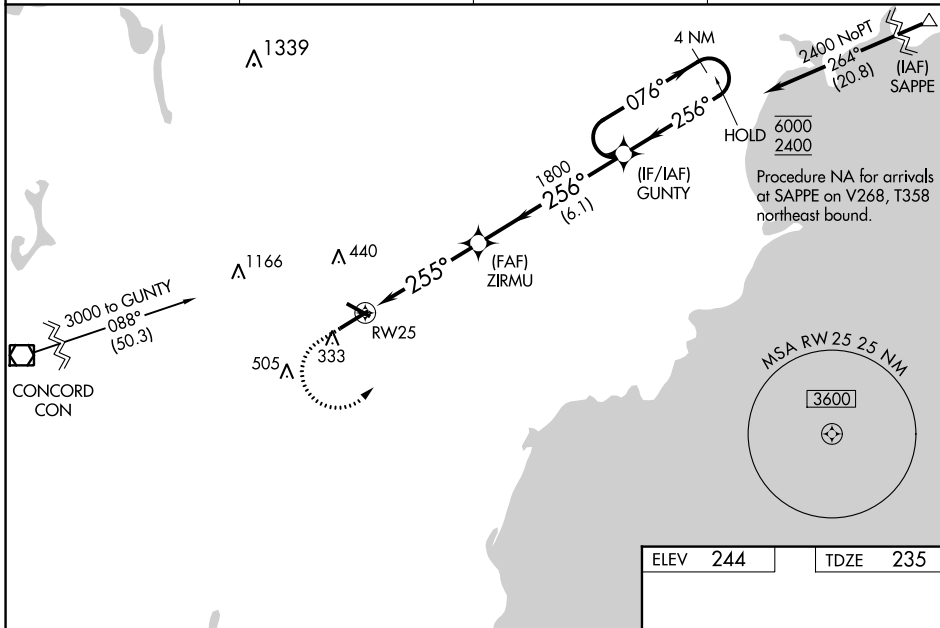
SANFORD SEACOAST RGNL (SFM)

RNP APCH - GPS.

▼ Baro-VNAV and VDP NA when using Rochester altimeter setting. Rwy 25 helicopter visibility reduction below $\frac{3}{4}$ SM NA. For uncompensated Baro-VNAV systems, LNAV/VNAV NA below -15°C or above 54°C. Inop table does not apply to LPV or LNAV Cats A and B. For inop ALS, increase LNAV/VNAV all Cats visibility to $1\frac{1}{2}$ and LNAV Cats C/D visibility to 1%. When local altimeter setting not received, use Rochester altimeter setting: increase LPV DA to 534; increase LNAV/VNAV DA to 713 and visibility all Cats $\frac{1}{8}$ SM; increase all MDAs 40 feet and LNAV Cats C/D visibility $\frac{1}{8}$ SM and Circling Cat C visibility $\frac{1}{4}$ SM. For inop ALS, increase LNAV/VNAV all Cats visibility to 1% and LNAV Cats C/D visibility to 1%.

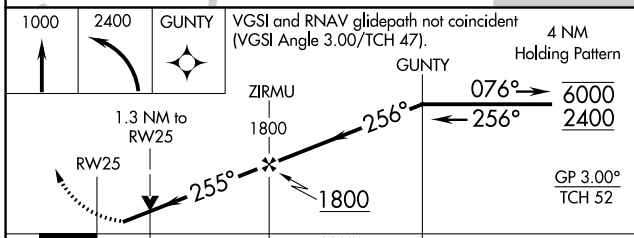
ODALS
 MISSED APPROACH: Climb to 1000 then climbing left turn to 2400 direct GUNTY and hold.

AWOS-3PT 120.025	PORTLAND APP CON ★ 119.75 269.35	CINC DEL 121.725	UNICOM 123.075 (CTAF) 0
----------------------------	--	----------------------------	--

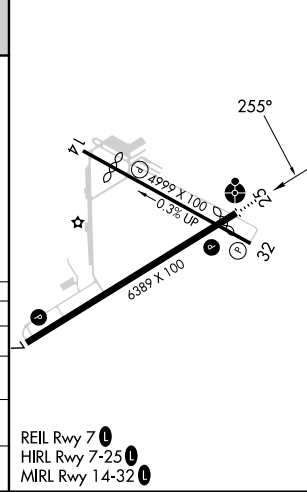


NE-1, 16 MAY 2024 to 13 JUN 2024

NE-1, 16 MAY 2024 to 13 JUN 2024



ELEV 244	TDZE 235
-----------------	-----------------



CATEGORY	A	B	C	D
LPV DA		496- $\frac{3}{4}$	261 (300- $\frac{3}{4}$)	
LNAV/VNAV DA		675-1 $\frac{1}{8}$	440 (500-1 $\frac{1}{8}$)	
LNAV MDA	680- $\frac{3}{4}$	445 (500- $\frac{3}{4}$)	680-1 $\frac{1}{8}$	445 (500-1 $\frac{1}{8}$)
CIRCLING	760-1	516 (600-1)	1180-2 $\frac{3}{4}$ 936 (1000-2 $\frac{3}{4}$)	1240-3 996 (1000-3)

REIL Rwy 7 **0**
HIRL Rwy 7-25 **0**
MRL Rwy 14-32 **0**