

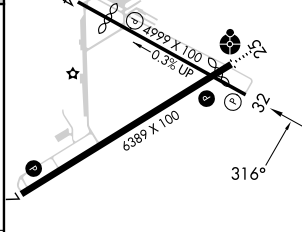
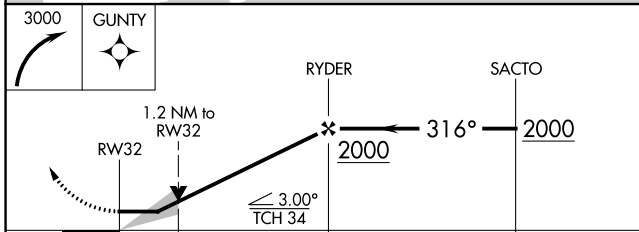
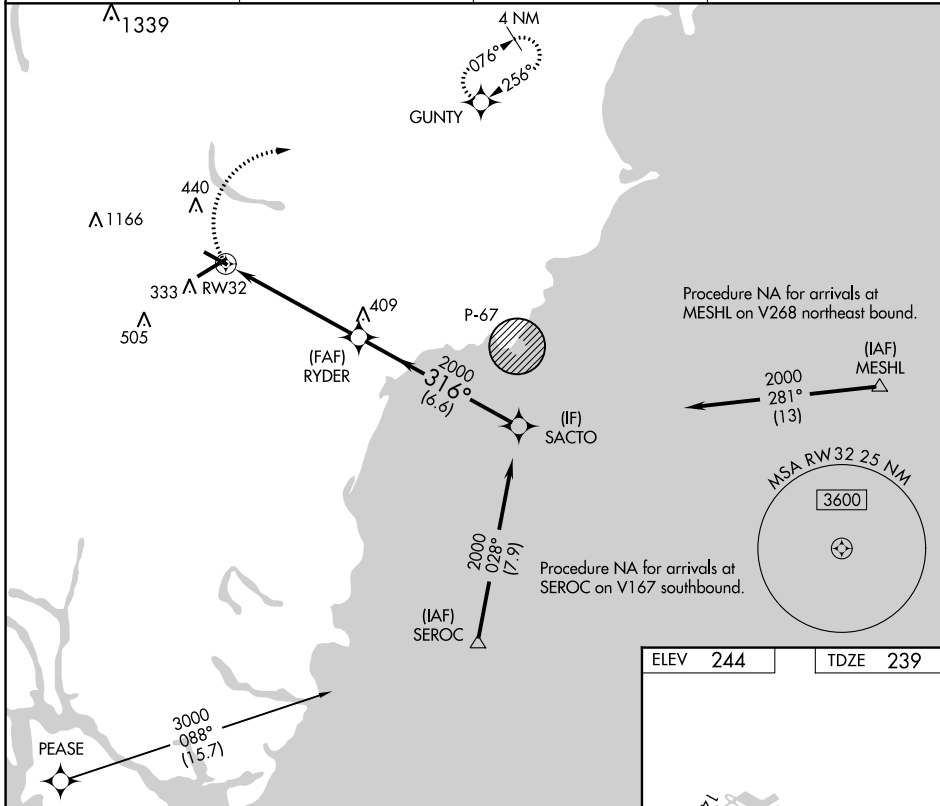
APP CRS 316°	Rwy Idg TDZE Apt Elev	4999 239 244
------------------------	-----------------------------	---

RNAV (GPS) RWY 32

SANFORD SEACOAST RGNL (SF'M)

RNP APCH.		MISSED APPROACH: Climbing right turn to 3000 direct GUNTY and hold, continue climb-in-hold to 3000.	
-----------	--	---	--

AWOS-3PT 120.025	PORTLAND APP CON* 119.75 269.35	CLNC DEL 121.725	UNICOM 123.075 (CTAF) 0
----------------------------	---	----------------------------	-----------------------------------



CATEGORY	A	B	C	D
LNAV MDA	660-1	421 (500-1)	660-1¼	421 (500-1¼)
CIRCLING	760-1	516 (600-1)	1180-2¾ 936 (1000-2¾)	1240-3 996 (1000-3)

ELEV 244	TDZE 239
REIL Rwy 7 0	HIRL Rwy 7-25 0
MIRL Rwy 14-32 0	

NE-1, 16 MAY 2024 to 13 JUN 2024

NE-1, 16 MAY 2024 to 13 JUN 2024