

WAAS CH 86921 W07A	APP CRS 075°	Rwy ldg TDZE 241 Apt Elev 244	6389
--	------------------------	---	-------------

RNAV (GPS) RWY 7

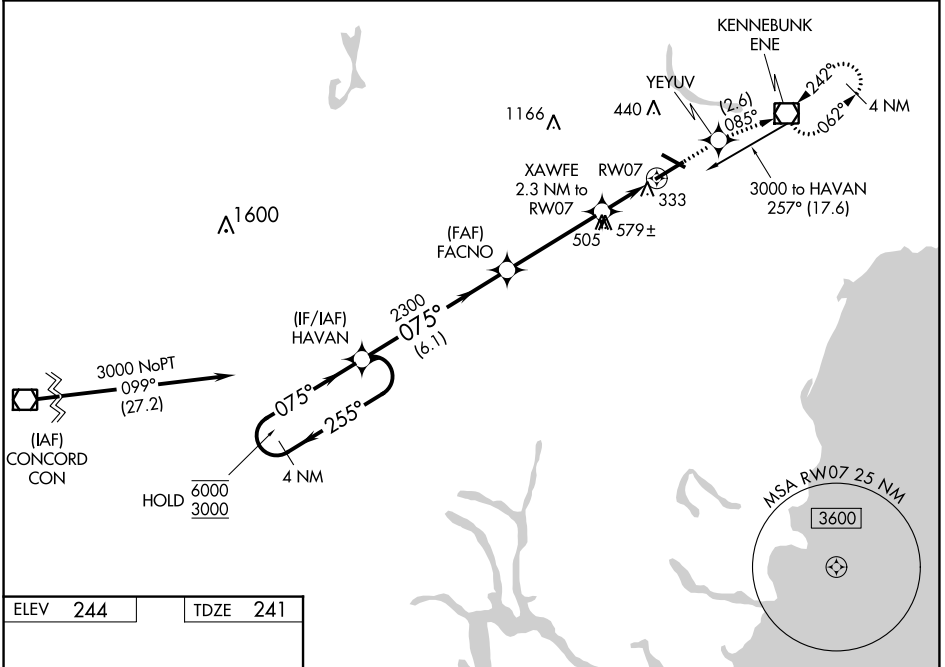
SANFORD SEACOAST RGNL (SFM)

RNP APCH - GPS.

⚠ Rwy 7 helicopter visibility reduction below 3/4 SM NA. For uncompensated Baro-VNAV systems, LNAV/VNAV NA below -15°C or above 54°C. Baro-VNAV and VDP NA when using Rochester altimeter setting. When local altimeter setting not received, use Rochester altimeter setting: increase LPV DA to 479; increase LNAV/VNAV DA to 699 and visibility all Cats 1/8 SM, increase all MDAs 40 feet, and Circling Cat C visibility 1/4 SM.

MISSED APPROACH: Climb to 3000 direct YEYUV and on track 085° to ENE VOR/DME and hold, continue climb-in-hold to 3000.

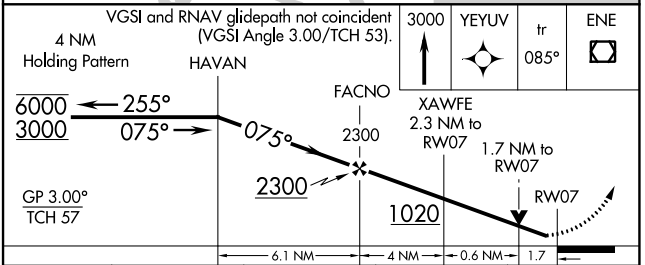
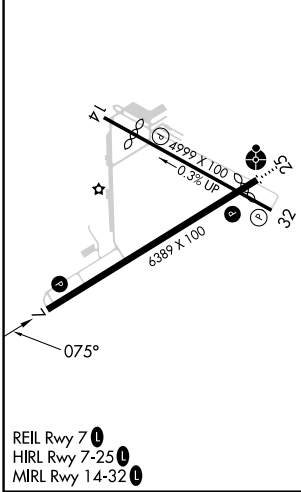
AWOS-3PT 120.025	PORTLAND APP CON★ 119.75 269.35	CLNC DEL 121.725	UNICOM 123.075 (CTAF)
----------------------------	---	----------------------------	---------------------------------



NE-1, 16 MAY 2024 to 13 JUN 2024

NE-1, 16 MAY 2024 to 13 JUN 2024

ELEV 244	TDZE 241
----------	----------



CATEGORY	A	B	C	D
LPV DA		441-3/4	200 (200-3/4)	
LNAV/VNAV DA		650-1 3/8	409 (500-1 3/8)	
LNAV MDA	840-1	599 (600-1)	840-1 3/4	599 (600-1 3/4)
C CIRCLING	840-1	596 (600-1)	1180-2 3/4 936 (1000-2 3/4)	1240-3 996 (1000-3)