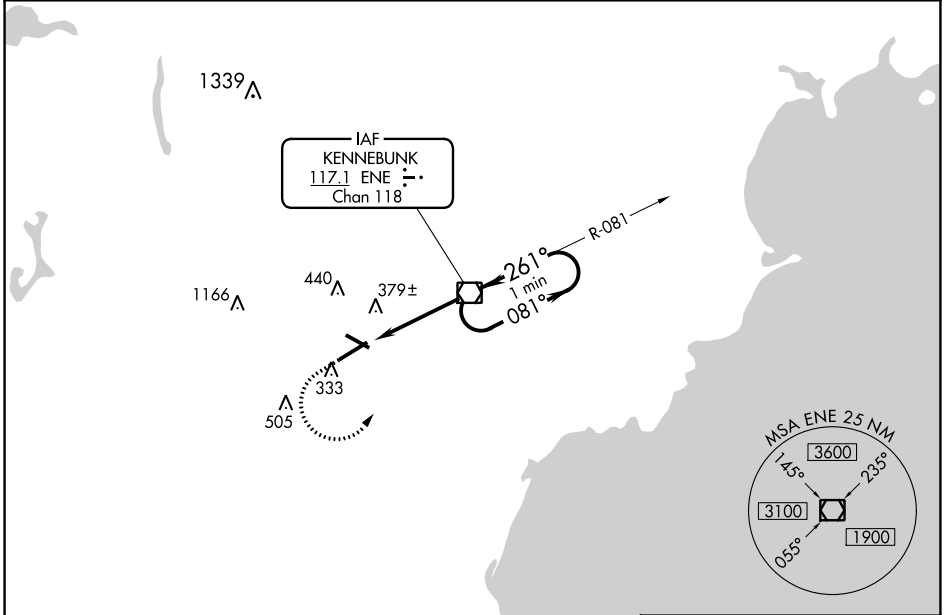


VORTAC ENE 117.1 Chan 118	APP CRS 261°	Rwy Idg TDZE Apt Elev	6001 235 244
---	------------------------	-----------------------------	---

VOR RWY 25
SANFORD SEACOAST RGNL (SFM)

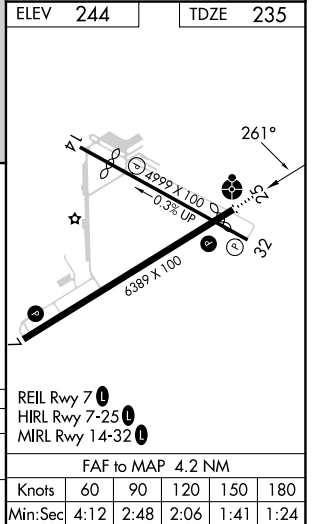
<p>⚠ Inoperative table does not apply to S-25 Cats A/B. For inoperative ODALS, increase S-25 Cats C/D visibility to 1$\frac{1}{8}$. When local altimeter setting not received, use Rochester, NH altimeter setting increase all MDA 40 feet, S-25 Cats C/D visibility $\frac{1}{8}$ SM, and Circling Cat C visibility $\frac{1}{4}$ SM; for inop ODALS, increase S-25 Cats C/D visibility to 1$\frac{1}{8}$. Rwy 25 helicopter visibility reduction below $\frac{3}{4}$ SM NA.</p>		<p>ODALS ⚠ ...</p>	<p>MISSED APPROACH: Climb to 800 then climbing left turn to 2000 direct ENE VOR/DME and hold.</p>
AWOS-3PT 120.025	PORTLAND APP CON * 119.75 269.35	CLNC DEL 121.725	UNICOM 123.075 (CTAF) 0



NE-1, 16 MAY 2024 to 13 JUN 2024

NE-1, 16 MAY 2024 to 13 JUN 2024

ELEV	244	TDZE	235
800	2000	ENE	One Minute Holding Pattern
<p>ENE VOR/DME</p> <p>081° → 2000</p> <p>← 261°</p> <p>261°</p> <p>1700</p> <p>3.17°</p> <p>TCH 47</p> <p>1.1 3.1 NM</p>			
CATEGORY	A	B	C D
S-25	640-1 405 (400-1)		
CIRCLING	760-1 516 (600-1)	1180-2 $\frac{3}{4}$ 936 (1000-2 $\frac{3}{4}$)	1240-3 996 (1000-3)



REIL Rwy 7 **0**
HIRL Rwy 7-25 **0**
MIRL Rwy 14-32 **0**

FAF to MAP 4.2 NM					
Knots	60	90	120	150	180
Min:Sec	4:12	2:48	2:06	1:41	1:24