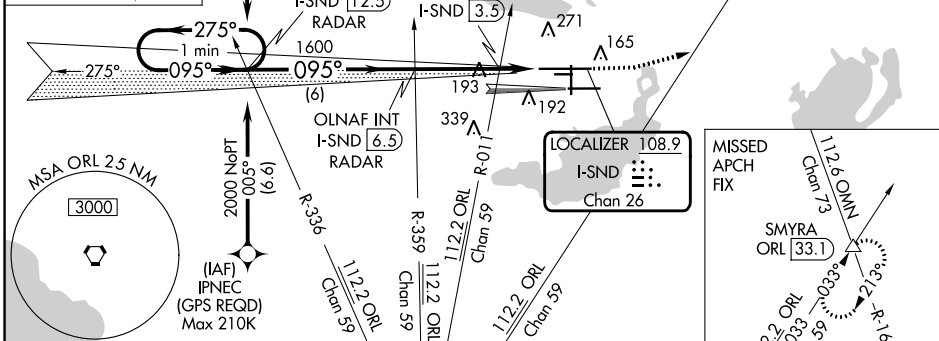
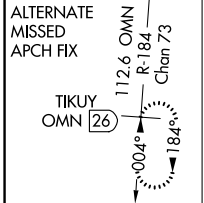


LOC/DME I-SND 108.9 APP CRS 095° Rwy ldg 10002 TDZE 55 Apt Elev 55 Chan 26

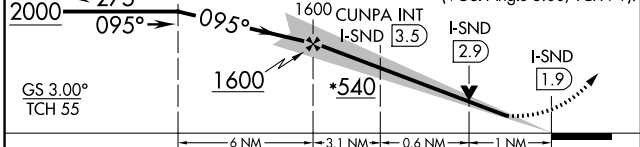
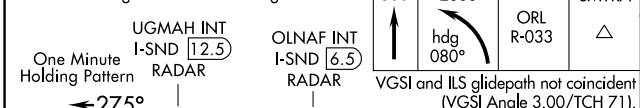
ILS or LOC RWY 9L ORLANDO SANFORD INTL (SF'B)

VDP NA with Exec altimeter setting. When local altimeter setting not received, use Exec altimeter setting: increase DA to 298 feet; increase all MDAs 60 feet and visibility Cats C and D 1/2 SM. Simultaneous approach authorized with Rwy 9R. Circling to Rwy 27C NA at night. MALS R MISSED APPROACH: Climb to 500 then climbing left turn to 2000 on heading 080° and ORL VORTAC R-033 to SMYRA INT/ORL 33.1 DME and hold.

ORLANDO APP CON 135.3 351.9 (NORTH) 119.775 351.9 (SOUTH) SANFORD TOWER\* 120.3(CTAF) 0 254.35 GND CON 121.35 254.35 CLNC DEL 123.975 CLNC DEL 121.35 (when twr closed)



\*600 when using Exec altimeter setting.



ELEV 55 TDZE 55. Includes a table of S-ILS and S-LOC frequencies, a table of circling minima for CUNPA and S-LOC, and a table of knots vs. minutes. Also lists MIRL, HIRL, and REIL lights, and a scale of 4.7 NM.

SE-3, 16 MAY 2024 to 13 JUN 2024

SE-3, 16 MAY 2024 to 13 JUN 2024