

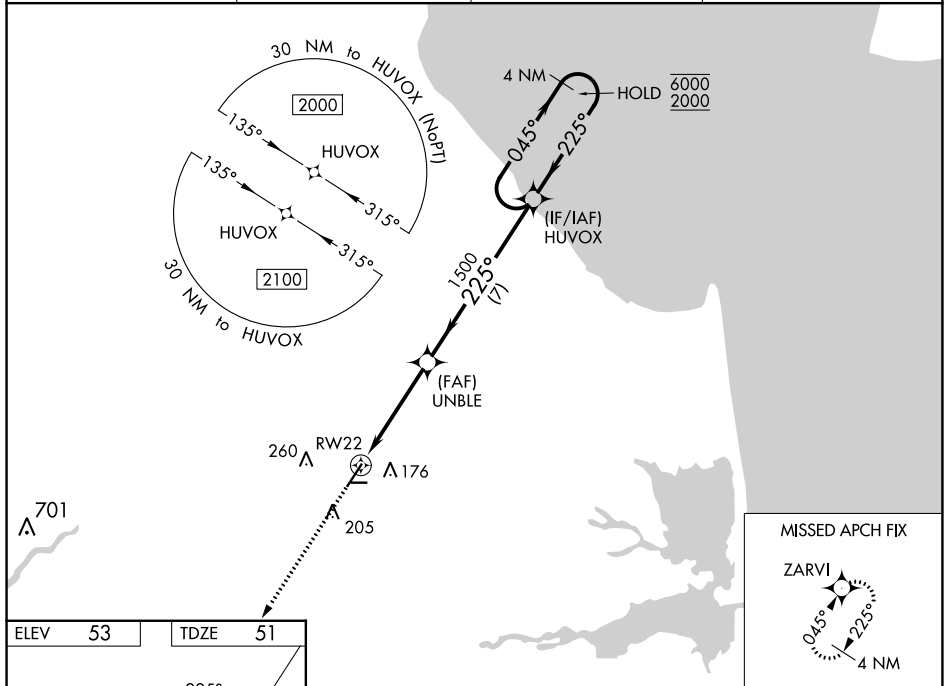
WAAS CH 60921 W22A	APP CRS 225°	Rwy Idg TDZE Apt Elev	5331 51 53
--	------------------------	-----------------------------	---------------------------------------

RNAV (GPS) RWY 22

DELAWARE COASTAL (GED)

RNP APCH.		MISSED APPROACH: Climb to 2000 direct ZARVI and hold.	
<p>▽ ▲ Rwy 22 helicopter visibility reduction below ¾ NA. For uncompensated Baro-VNAV systems, LNAV/VNAV NA below -11°C or above 54°C.</p>			

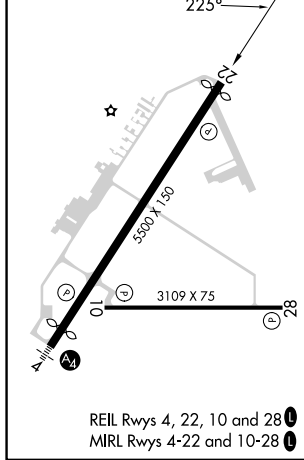
ASOS 118.375	DOVER APP CON 132.425 257.875	GCO 125.55	UNICOM 123.0 (CTAF) 0
------------------------	---	----------------------	---------------------------------



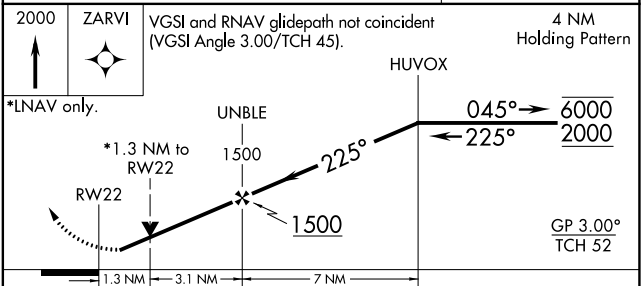
NE-3, 16 MAY 2024 to 13 JUN 2024

NE-3, 16 MAY 2024 to 13 JUN 2024

ELEV 53	TDZE 51
---------	---------



REIL Rwy 4, 22, 10 and 28
MIRL Rwy 4-22 and 10-28



CATEGORY	A	B	C	D
LPV DA		321-7/8	270 (300-7/8)	
LNAV/VNAV DA		446-1 1/8	395 (400-1 1/8)	
LNAV MDA	500-1	449 (500-1)	500-1 1/8	449 (500-1 1/8)
CIRCLING	560-1 507 (600-1)	580-1 527 (600-1)	720-1 3/4 667 (700-1 3/4)	720-2 667 (700-2)