

VOR/DME	ATR	APP CRS	Rwy Ldg	5331
112.6		234°	TDZE	51
Chan 73			Apt Elev	53

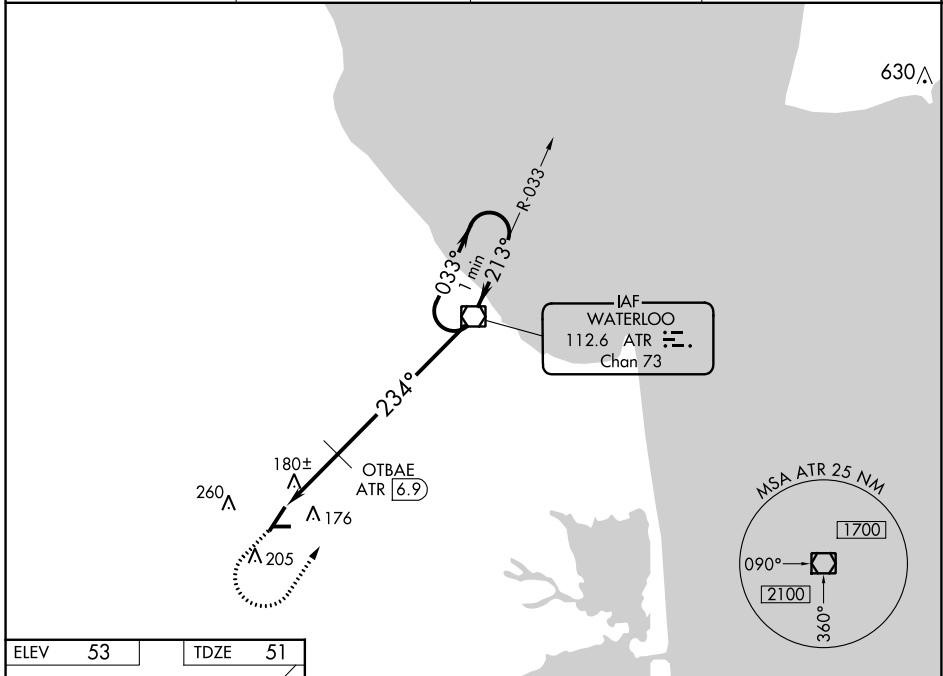
VOR RWY 22

DELAWARE COASTAL (GED)

⚠ Rwy 22 helicopter visibility reduction below 1 SM NA.
⚠ Rwy 22 Straight-In and Circling minimums NA at night.

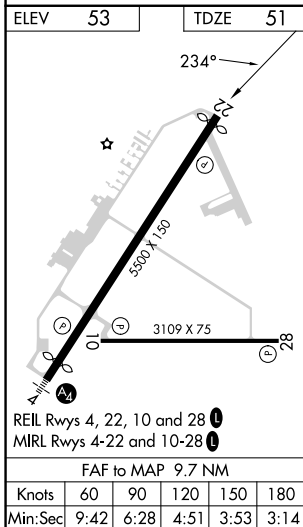
MISSED APPROACH: Climb to 800 then climbing left turn to 3000 direct ATR VOR/DME and hold.

ASOS	DOVER APP CON	GCO	UNICOM
118.375	132.425 257.875	125.55	123.0 (CTAF) 0



NE-3, 16 MAY 2024 to 13 JUN 2024

NE-3, 16 MAY 2024 to 13 JUN 2024



ELEV 53	TDZE 51	800	3000	ATR	VGSI and descent angles not coincident (VGSI Angle 3.00/TCH 45).	One Minute Holding Pattern
234°				OTBAE ATR 6.9	ATR VOR/DME	033° → 3000
		680	2.83° TCH 52	← 213°		
-2.8 NM		6.9 NM				
CATEGORY	A	B	C	D		
S-22	680-1	629 (700-1)	680-1¾	629 (700-1¾)		
C CIRCLING	680-1	627 (700-1)	720-1¾	667 (700-1¾)	720-2	667 (700-2)
OTBAE FIX MINIMUMS						
S-22	440-1	389 (400-1)	440-1⅛	389 (400-1⅛)		
C CIRCLING	560-1	507 (600-1)	580-1	527 (600-1)	720-1¾	667 (700-1¾)
					720-2	667 (700-2)