

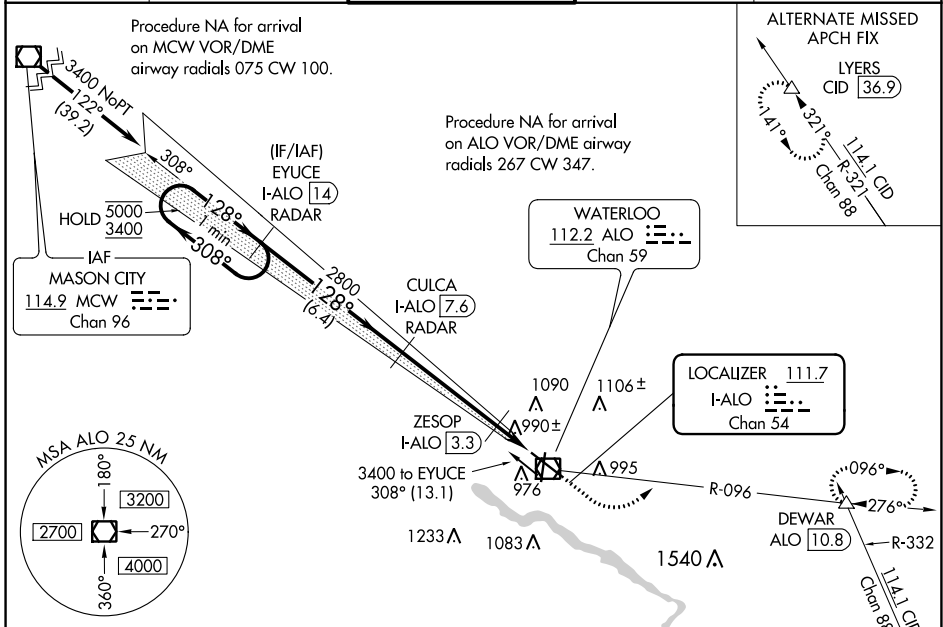
LOC/DME I-ALO 111.7 Chan 54	APP CRS 128°	Rwy Idg 8399 TDZE 873 Apt Elev 873
---	------------------------	---

ILS or LOC RWY 12

WATERLOO RGNL (A.LO)

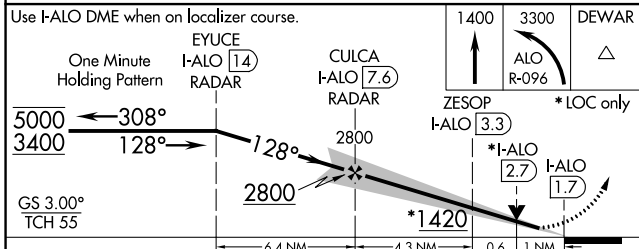
DME or RADAR required.		MALSR	MISSED APPROACH: Climb to 1400 then climbing left turn to 3300 on ALO VOR/DME R-096 to DEWAR INT/ALO VOR/DME 10.8 DME and hold.
For inop ALS, increase S-LOC 12 ZESOP FIX MINIMUMS Cats C/D visibility to RVR 5500. #RVR 1800 authorized with the use of FD or AP or HUD to DA.			

ATIS 120.65	WATERLOO APP CON * 118.9 251.15	WATERLOO TOWER * 125.075 (CTAF) 257.8	GND CON 121.9 269.1	UNICOM 122.95
-----------------------	---	---	-------------------------------	-------------------------

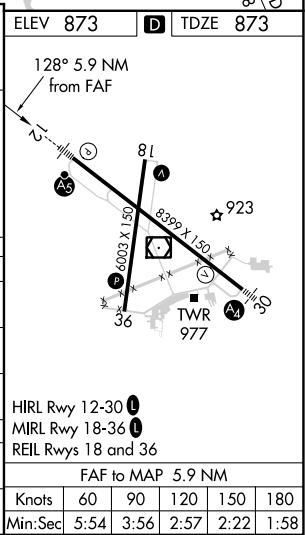


NC-3, 16 MAY 2024 to 13 JUN 2024

NC-3, 16 MAY 2024 to 13 JUN 2024



Use I-ALO DME when on localizer course.	1400	3300	DEWAR
One Minute Holding Pattern	EYUCE I-ALO 1.4 RADAR	ALO R-096	△
5000 ← 308°	CULCA I-ALO 7.6 RADAR	ZESOP I-ALO 3.3	*LOC only
3400		*I-ALO 2.7	
GS 3.00° TCH 55		I-ALO 1.7	
	2800		
	← 6.4 NM	← 4.3 NM	← 0.6 NM
CATEGORY	A	B	C
S-ILS 12#	1073/24 200 (200-½)		
S-LOC 12	1420/24	547 (600-½)	1420/60 547 (600-1¼)
CIRCLING	1420-1	547 (600-1)	1480-1¾ 607 (700-1¾) 1600-2¼ 727 (800-2¼)
ZESOP FIX MINIMUMS (DME REQUIRED)			
S-LOC 12	1240/24	367 (400-½)	1240/35 367 (400-¾)
CIRCLING	1360-1 487 (500-1)	1400-1 527 (600-1)	1480-1¾ 607 (700-1¾) 1600-2¼ 727 (800-2¼)



FAF to MAP 5.9 NM					
Knots	60	90	120	150	180
Min:Sec	5:54	3:56	2:57	2:22	1:58