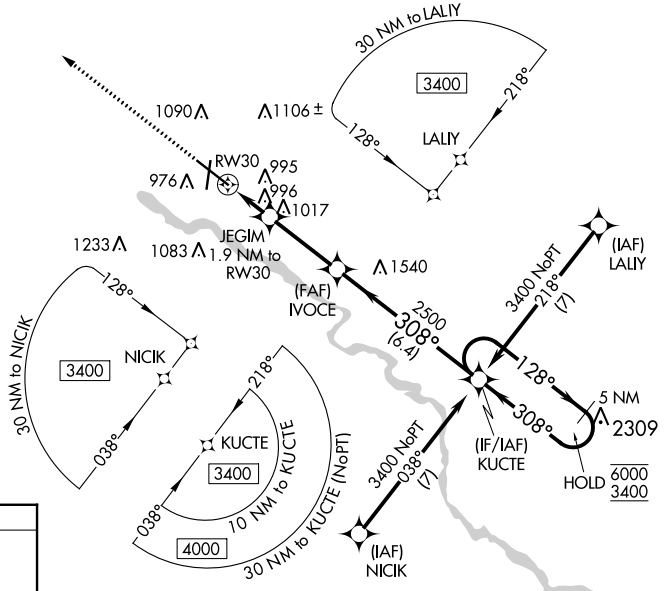


WAAS CH 78201 W30A	APP CRS 308°	Rwy Idg TDZE 868 Apt Elev 873
--	------------------------	---

RNAV (GPS) RWY 30

WATERLOO RGNL (A.L.O)

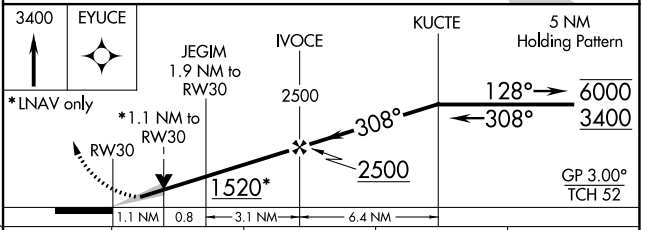
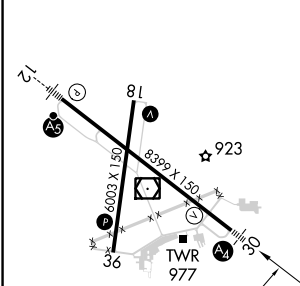
RNP APCH.		MALS	MISSED APPROACH: Climb to 3400 direct EYUCE and hold.	
<p>⚠ For uncompensated Baro-VNAV systems, LNAV/VNAV NA below -20°C or above 54°C. Inop table does not apply LPV all Cats.</p> <p>⚠ For inop ALS, increase LNAV/VNAV all Cats visibility to 7/5 SM.</p>		<p>⦿ =</p>		
ATIS 120.65	WATERLOO APP CON* 118.9 251.15	WATERLOO TOWER* 125.075 (CTAF) 0 257.8	GND CON 121.9 269.1	UNICOM 122.95



NC-3, 16 MAY 2024 to 13 JUN 2024

NC-3, 16 MAY 2024 to 13 JUN 2024

ELEV 873	D	TDZE 868
----------	----------	----------



CATEGORY	A	B	C	D
LPV DA		1068-3/4	200 (200-3/4)	
LNAV/VNAV DA		1145-3/4	277 (300-3/4)	
LNAV MDA	1260-3/4	392 (400-3/4)	1260-7/8	392 (400-7/8)
C CIRCLING	1360-1 487 (500-1)	1400-1 527 (600-1)	1480-1 3/4 607 (700-1 3/4)	1600-2 1/4 727 (800-2 1/4)

HIRL Rwy 12-30
MIRL Rwy 18-36
REL Rwy 18 and 36