

VOR/DME ALO <b>112.2</b> Chan <b>59</b>	APP CRS <b>133°</b>	Rwy Idg TDZE Apt Elev	<b>8399</b> <b>873</b> <b>873</b>
---	------------------------	-----------------------------	---

# VOR RWY 12

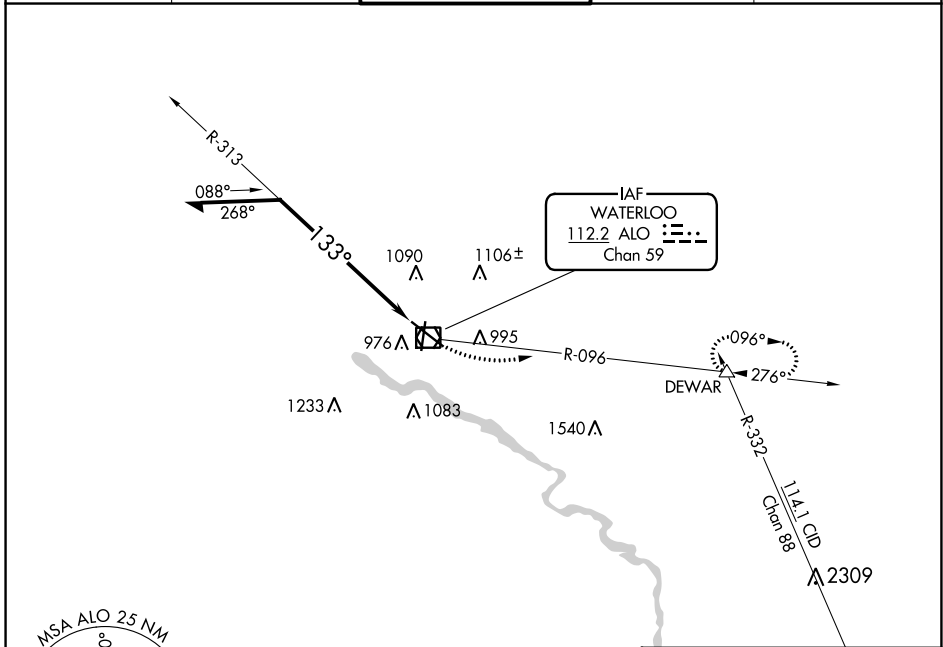
WATERLOO RGNL (ALO)

**⚠** For inop ALS, increase S-12 Cat C/D visibility to 1¼ SM.

**MALSR** 

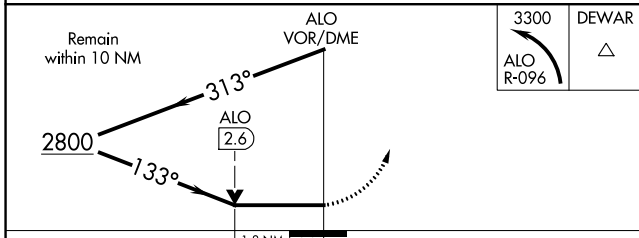
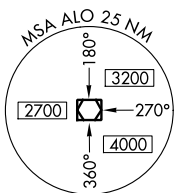
**MISSED APPROACH:** Climbing left turn to 3300 on ALO VOR/DME R-096 to DEWAR INT and hold.

ATIS <b>120.65</b>	WATERLOO APP CON * <b>118.9 251.15</b>	WATERLOO TOWER * <b>125.075 (CTAF) 257.8</b>	GND CON <b>121.9 269.1</b>	UNICOM <b>122.95</b>
-----------------------	---	---	-------------------------------	-------------------------

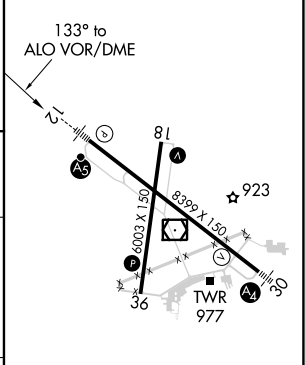


NC-3, 16 MAY 2024 to 13 JUN 2024

NC-3, 16 MAY 2024 to 13 JUN 2024



ELEV 873	<b>D</b> TDZE 873
----------	-------------------



CATEGORY	A	B	C	D
S-12	1500/24	627 (700-½)	1500-1¾	627 (700-1¾)
<b>C</b> CIRCLING	1500-1	627 (700-1)	1500-1¾	1600-2¼ 627 (700-1¾) 727 (800-2¼)

HIRL Rwy 12-30 **Ⓛ**  
MIRL Rwy 18-36 **Ⓛ**  
REIL Rwy 18 and 36