

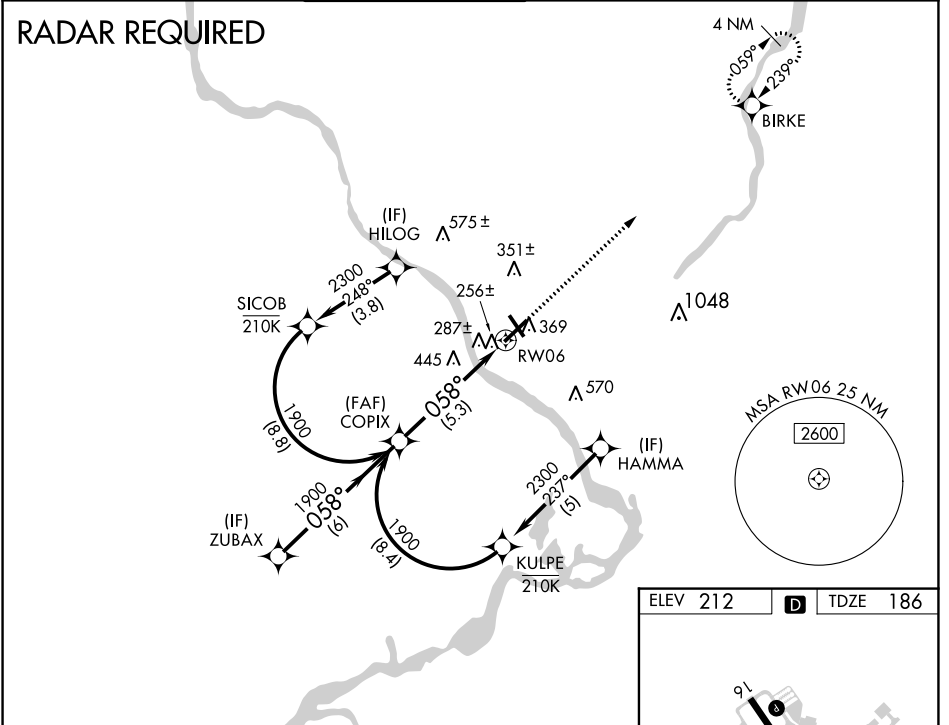
| | | |
|-------------|----------|-------------|
| APP CRS | Rwy Idg | 6006 |
| 058° | TDZE | 186 |
| | Apt Elev | 212 |

RNAV (RNP) Y RWY 6

TRENTON MERCER (TTN)

| | | |
|---|--------------|---|
| <p>▽ For uncompensated Baro-VNAV systems, procedure NA below -13°C (8°F) or above 54°C (130°F). GPS required.</p> <p>For inoperative MALSR, increase RNP 0.10 DA all Cats visibility to 1 mile, increase RNP 0.30 DA all Cats visibility to 1½ mile.</p> | <p>MALSR</p> | <p>MISSED APPROACH: Climb to 2600 direct BIRKE and hold.</p> |
| | | |

| | | | | | | |
|----------------|--------------|--------------|-----------------------------|--------------------|--------------------|---------------|
| ATIS | PHILADELPHIA | APP CON | TRENTON TOWER * | GND CON | CLNC DEL | UNICOM |
| 126.775 | 123.8 | 291.7 | 120.7 (CTAF) 0 257.8 | 121.9 257.8 | 121.9 257.8 | 122.95 |



NE-2, 16 MAY 2024 to 13 JUN 2024

NE-2, 16 MAY 2024 to 13 JUN 2024

| | | |
|----------|----------|----------|
| ELEV 212 | D | TDZE 186 |
|----------|----------|----------|

COPIX 1900

1900

GP 3.00°
TCH 60

5.3 NM

VGSI and RNAV glidepath not coincident.
See planview for multiple IF locations.

2600 BIRKE

| | | | | |
|-------------|---|--------|--------------|---|
| CATEGORY | A | B | C | D |
| RNP 0.10 DA | | 510-½ | 324 (300-½) | |
| RNP 0.30 DA | | 668-1½ | 482 (500-1½) | |

AUTHORIZATION REQUIRED

HIRL Rwys 6-24 and 16-34 **!**
REIL Rwys 16, 24 and 34 **!**