

WAAS CH 56430 W06A	APP CRS 058°	Rwy Idg TDZE Apt Elev	6006 186 213
--	------------------------	-----------------------------	---


RNAV (GPS) Z RWY 6

TRENTON MERCER (TTN)

RNP APCH - GPS.

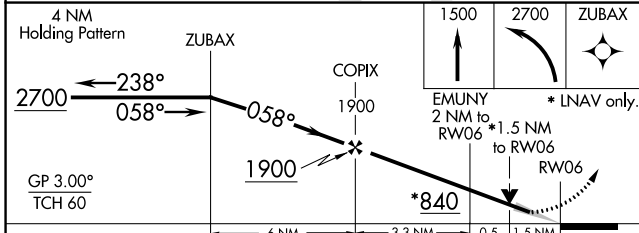
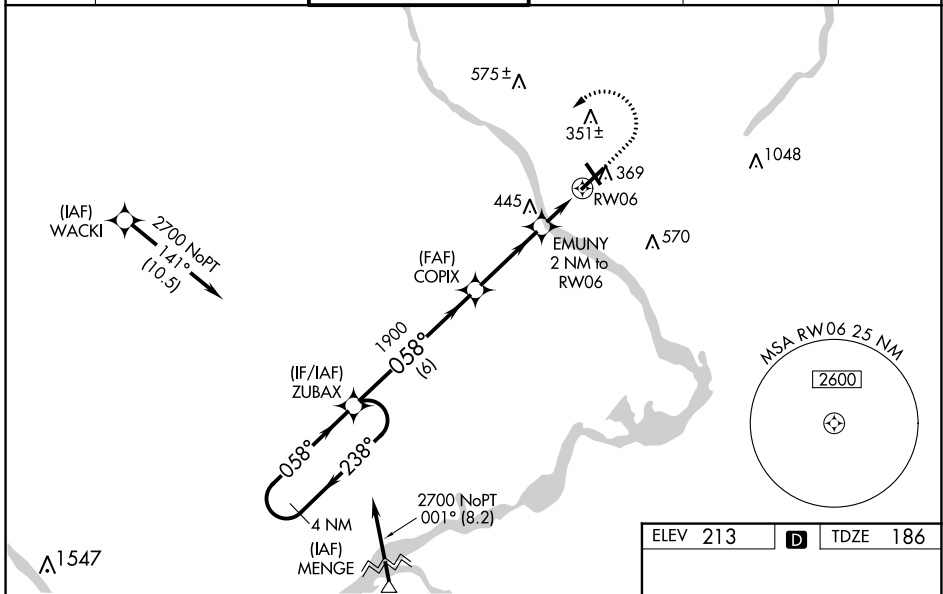
⚠ Baro-VNAV and VDP NA when using Northeast Philadelphia altimeter setting. For uncompensated Baro-VNAV systems, LNAV/VNAV NA below -13°C or above 54°C. When local altimeter setting not received, use Northeast Philadelphia altimeter setting and increase LPV DA to 437 feet; increase LNAV/VNAV DA to 658 feet and all visibilities ¼ SM; increase all MDAs 60 feet and LNAV visibility Cat C/D ¼ SM, and Circling visibility Cat C ¼ SM. For inop ALS, increase LNAV visibility Cats C/D to 1 ¾. For inop ALS when using Northeast Philadelphia altimeter setting, increase LNAV/VNAV all Cats visibility to 1 ¾ and LNAV visibility Cats C/D to 1 ¾. When Circling to Rwy 34 at night, operational VGSI required, remain on or above VGSI glidepath until threshold.

MALS

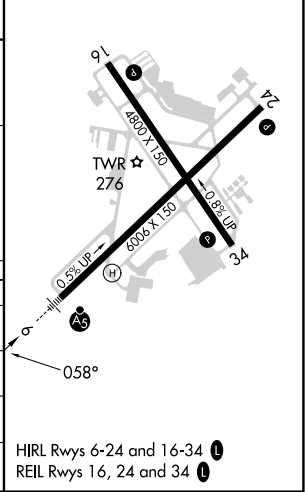


MISSED APPROACH:
Climb to 1500 then climbing left turn to 2700 direct ZUBAX and hold.

ATIS 126.775	PHILADELPHIA APP CON 123.8 291.7	TRENTON TOWER ★ 120.7 (CTAF) 0 257.8	GND CON 121.9 257.8	CLNC DEL 121.9 257.8	UNICOM 122.95
------------------------	--	--	-------------------------------	--------------------------------	-------------------------



ELEV 213	D	TDZE 186
----------	----------	----------



CATEGORY	A	B	C	D
LPV DA		390-½	204 (200-½)	
LNAV/VNAV DA		611-¾	425 (400-¾)	
LNAV MDA	700-½	514 (500-½)	700-1	514 (500-1)
C CIRCLING	700-1	487 (500-1)	760-1½ 547 (600-1½)	960-2½ 747 (800-2½)

NE-2, 16 MAY 2024 to 13 JUN 2024

NE-2, 16 MAY 2024 to 13 JUN 2024