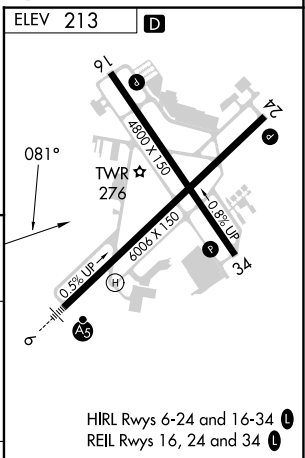
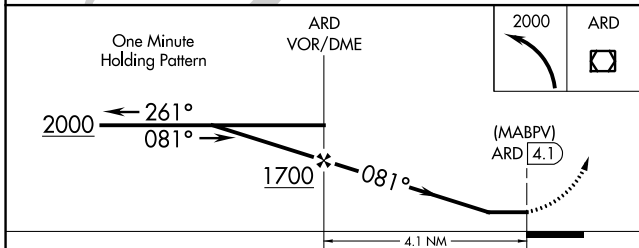
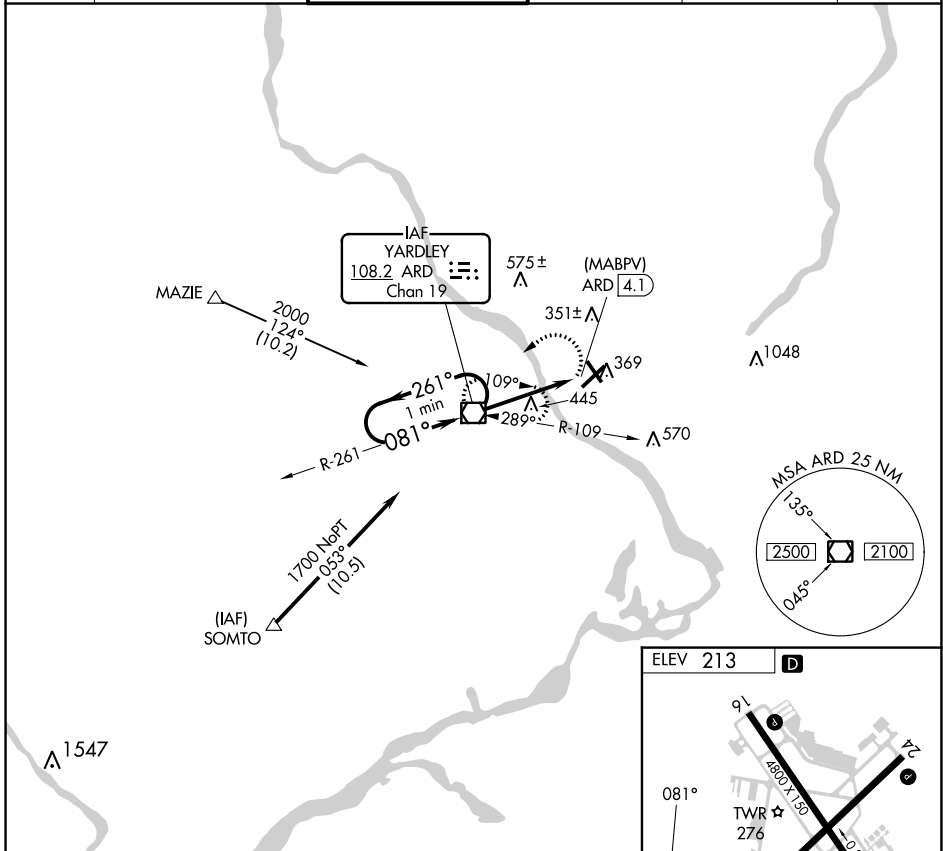


VOR/DME ARD 108.2 Chan 19	APP CRS 081°	Rwy Idg TDZE Apt Elev	N/A N/A 213
---	------------------------	-----------------------------	--

VOR or GPS-A
TRENTON MERCER (TTN)

▼ ▲	Night Landing: Rwy 34 operational VGSI required, remain on or above VGSI glidepath until threshold.	MISSED APPROACH: Climbing left turn to 2000 direct ARD VOR/DME and hold.
----------------------	---	--

ATIS 126.775	PHILADELPHIA APP CON 123.8 291.7	TRENTON TOWER ★ 120.7 (CTAF) 257.8	GND CON 121.9 257.8	CLNC DEL 121.9 257.8	UNICOM 122.95
------------------------	--	--	-------------------------------	--------------------------------	-------------------------



CATEGORY	A	B	C	D	FAF to MAP 4.1 NM					
C CIRCLING	700-1	487 (500-1)	760-1½ 547 (600-1½)	960-2½ 747 (800-2½)	Knots	60	90	120	150	180
					Min:Sec	4:06	2:44	2:03	1:38	1:22

NE-2, 16 MAY 2024 to 13 JUN 2024

NE-2, 16 MAY 2024 to 13 JUN 2024