

LOC I-SBP **109.7** APP CRS **110°** Rwy ldg **5300** TDZE **198** Apt Elev **212**

ILS or LOC RWY 11

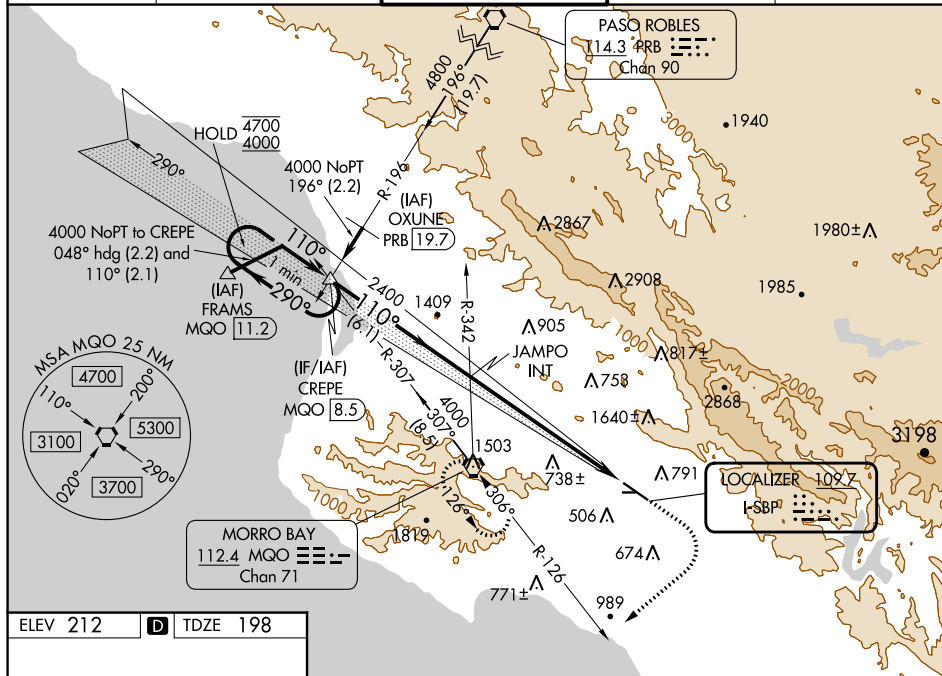
SAN LUIS OBISPO COUNTY RGNL (SBP)

⚠ Circling Rwy 25 NA at night. Circling NA north of Rwy 11-29. Autopilot coupled approach NA below 677. For inop ALS, increase S-ILS 11 all Cats visibility to ½ SM, S-LOC 11 Cat A visibility to ¼ SM, Cat B visibility to 1½ SM.

MALSR

MISSED APPROACH: Climb to 1000 then climbing right turn to 3300 on heading 215° and MQO VORTAC R-126 to MQO VORTAC and hold, continue climb-in-hold to 3300. S-ILS 11* missed approach requires minimum climb of 210 feet per NM to 1160.

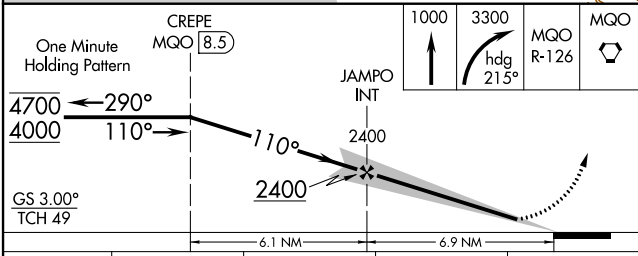
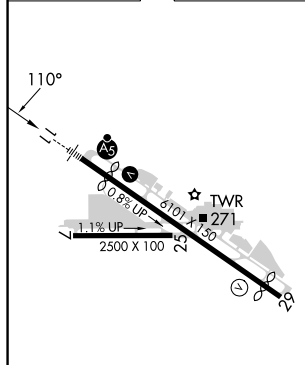
ATIS 120.6	SANTA BARBARA APP CON 127.725 244.575	SAN LUIS TOWER 124.0 (CTAF) 379.9	GND CON 121.6	UNICOM 122.95
-------------------	--	---	----------------------	----------------------



SW-3, 16 MAY 2024 to 13 JUN 2024

SW-3, 16 MAY 2024 to 13 JUN 2024

ELEV **212** TDZE **198**



CATEGORY	A	B	C	D
S-ILS 11*	398-½		200 (200-½)	
S-ILS 11	495-½		297 (300-½)	
S-LOC 11	1420-¾ 1222 (1300-¾)	1420-1 1222 (1300-1)	1420-3	1222 (1300-3)
CIRCLING	1420-1¼ 1208 (1300-1¼)	1420-1½ 1208 (1300-1½)	1500-3	1760-3 1548 (1600-3)

REIL Rwy 29 **1**
 HIRL Rwy 11-29 **1**
 FAF to MAP 6.9 NM

Knots	60	90	120	150	180
Min:Sec	6:54	4:36	3:27	2:46	2:18