

VOR/DME GDM <b>116.95</b> Chan <b>116 (Y)</b>	APP CRS <b>292°</b>	Rwy Idg TDZE Apt Elev <b>N/A</b> <b>556</b>
---	------------------------	--

# VOR-A

ORANGE MUNI(OR)E

DME required.

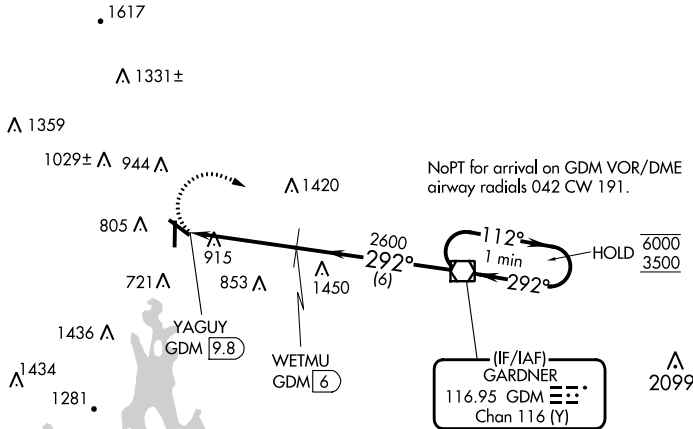
▼ Rwy 1, 19 helicopter visibility reduction below 1 SM NA. When local altimeter setting not received, use Keene altimeter setting and increase all MDAs 60 feet and Cat B visibility ¼ SM. Circling NA for Cats C/D to Rwys 14 and 32. Circling Rwy 1, 19 NA at night.

MISSED APPROACH: Climbing right turn to 3500 direct GDM VOR/DME and hold, continue climb-in-hold to 3500.

ASOS  
**135.675**

BOSTON CENTER  
**123.75 338.2**

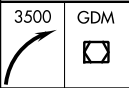
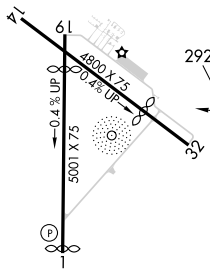
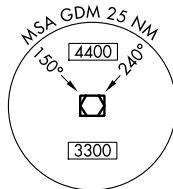
UNICOM  
**122.8 (CTAF) 0**



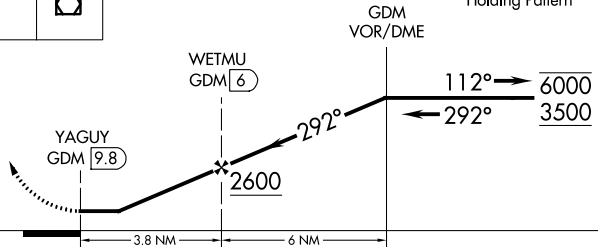
NE-1, 16 MAY 2024 to 13 JUN 2024

NE-1, 16 MAY 2024 to 13 JUN 2024

ELEV 556



One Minute Holding Pattern



MIRL Rwys 1-19 and 14-32 0

CATEGORY	A	B	C	D
<input checked="" type="checkbox"/> CIRCLING	1460-1¼	904 (1000-1¼)	1640-3 1084 (1100-3)	1740-3 1184 (1200-3)