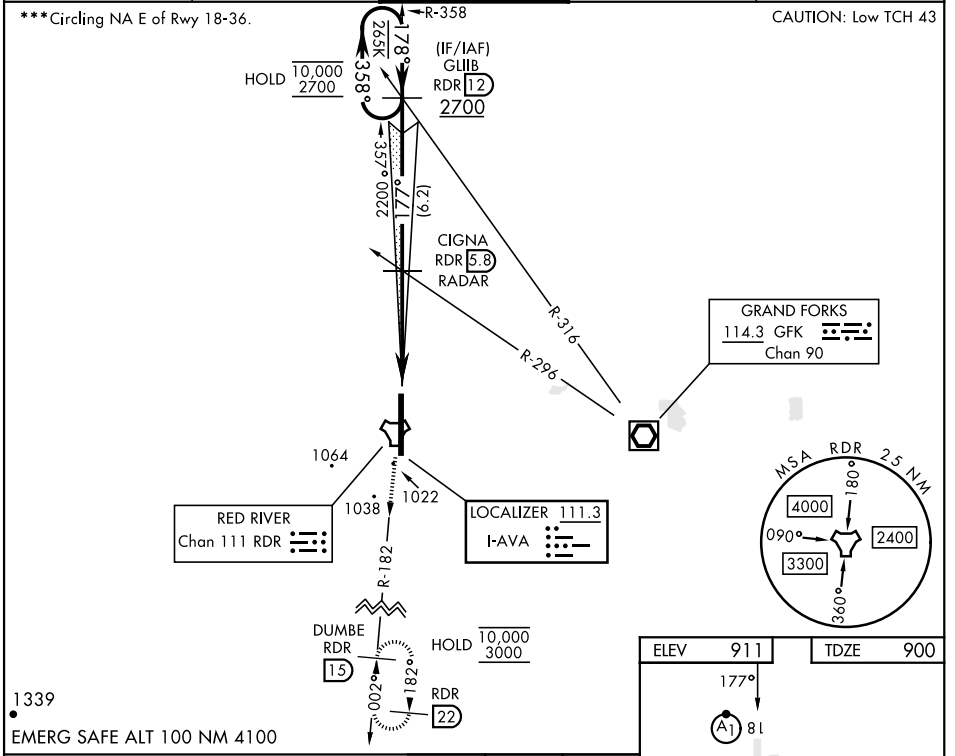


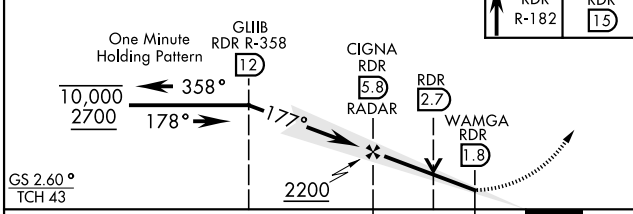
LOC I-AVA <b>111.3</b>	APCH CRS <b>177°</b>	Rwy Idg <b>12,351</b> TDZE <b>900</b> Arprt Elev <b>911</b>	AL-5010 [USAF]	GRAND FORKS AFB (KRDR)
---------------------------	-------------------------	---	----------------	------------------------

RADAR or DME required.	ALSIF-1 	MISSED APPROACH: Climb to 3000 on RDR TACAN R-182 to DUMBE and hold.
------------------------	-------------	--

ATIS <b>273.45</b>	APP CON <b>118.1 318.1</b>	RED RIVER TOWER <b>124.9 349.0</b>	GND CON <b>119.15 275.8</b>	CLNC DEL <b>119.15 360.7</b>
-----------------------	-------------------------------	---------------------------------------	--------------------------------	---------------------------------



1339  
EMERG SAFE ALT 100 NM 4100



CATEGORY	A	B	C	D	E
S-ILS 18*	1100/24		200	(200-½)	
S-LOC 18**	1340/24	440 (500-½)	1340/40	440	(500-¾)
CIRCLING***	1340-1 429 (500-1)	1380-1 469 (500-1)	1380-1½ 469 (500-1½)	1540-2 629 (700-2)	1560-2¼ 649 (700-2¼)

ELEV 911	TDZE 900				
177°					
HRL Rwy 18-36					
FAF to MAP 4.1 NM					
Knots	60	90	120	150	180
Min:Sec	4:06	2:44	2:03	1:38	1:22

NC-1, 16 MAY 2024 to 13 JUN 2024

NC-1, 16 MAY 2024 to 13 JUN 2024