

LOC I-ANB 111.5	APP CRS 052°	Rwy Idg 7000
		TDZE 595
		Apt Elev 612

ILS Y or LOC Y RWY 5

ANNISTON RGNL (ANB)

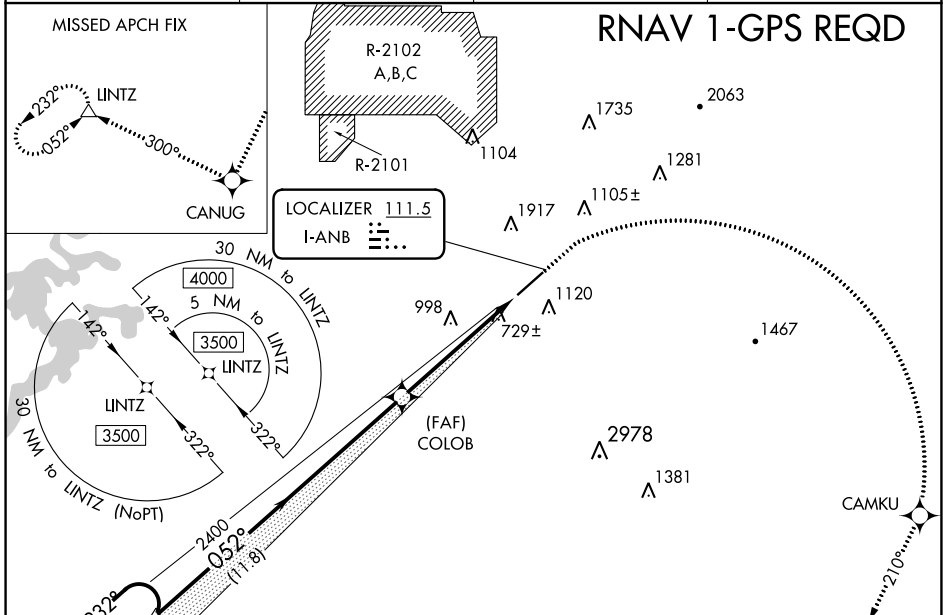
⚠ Circling NA north of Rwy 5-23. RNAV 1-GPS required. For inop ALS, increase S-ILS 5 all Cats visibility to 1 SM. When local altimeter setting not received, use Gadsden altimeter setting: increase DA to 975 and all visibilities ¼ SM; increase all MDAs 80 feet, and S-LOC 5 Cat C/D, and Circling Cat C visibilities ½ SM. For inop ALS when using Gadsden altimeter setting: increase S-ILS 5 all Cats to 1¼ SM.

MALSR



MISSED APPROACH: Climb to 1600 then climbing right turn to 3500 direct CAMKU then on track 210° to CANUG and on track 300° to LINTZ and hold.

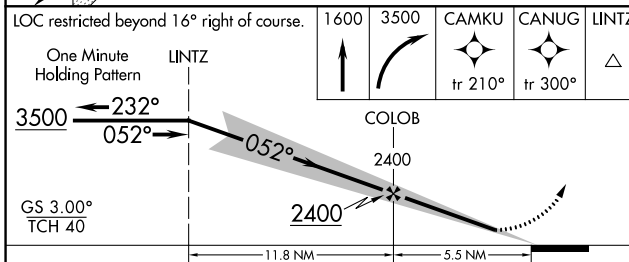
ASOS 119.675	BIRMINGHAM APP CON 132.15 285.45	CTAF 123.60	UNICOM 123.0
------------------------	--	-----------------------	------------------------



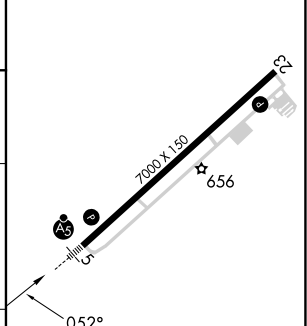
SE-4, 16 MAY 2024 to 13 JUN 2024

SE-4, 16 MAY 2024 to 13 JUN 2024

LOC restricted beyond 16° right of course.	1600	3500	CAMKU	CANUG	LINTZ
One Minute Holding Pattern	↑	↷	✧ tr 210°	✧ tr 300°	△



ELEV 612	TDZE 595
----------	----------



CATEGORY	A	B	C	D
S-ILS 5	909-½ 314 (300-½)			
S-LOC 5	1120-½	525 (600-½)	1120-1	525 (600-1)
C CIRCLING	1420-1	808 (900-1)	1420-2¼ 808 (900-2¼)	1820-3 1208 (1300-3)
FAF to MAP 5.5 NM				
Knots		60	90	120 150 180
Min:Sec		5:30	3:40	2:45 2:12 1:50