

WAAS CH 45931 W19A	APP CRS 188°	Rwy Idg TDZE 1409 Apt Elev 1409	8001
--	------------------------	---	-------------

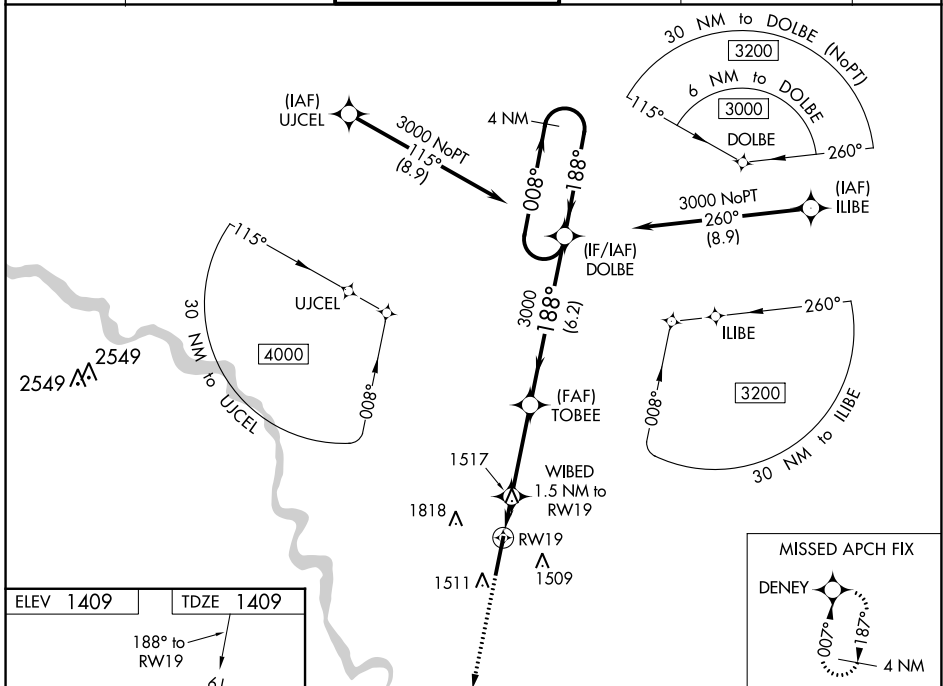
RNAV (GPS) RWY 19

BEECH FACTORY (B.E.C)

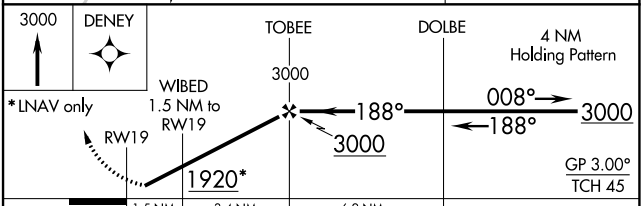
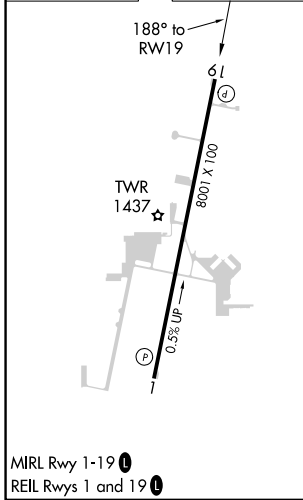
⚠ For uncompensated Baro-VNAV systems, LNAV/VNAV NA below -17°C (2°F) or above 54°C (130°F). DME/DME RNP-0.3 NA. Obtain local altimeter setting on CTAF; when not received, use Wichita Dwight D Eisenhower NH altimeter setting and increase all DA 36 feet and all MDA 40 feet; increase LPV all Cats and LNAV/VNAV all Cats visibility and LNAV Cat C and D visibility 1/8 mile and Circling Cat C and D visibility 1/4 mile. Baro-VNAV NA with Wichita Dwight D Eisenhower NH altimeter setting. Helicopter visibility reduction below 3/4 SM NA.

MISSED APPROACH: Climb to 3000 direct DENEY and hold.

AWOS-3PT 119.45	WICHITA APP CON 134.8 269.1	BEECH TOWER ★ 126.8 (CTAF) 0 313.6	GND CON 121.7	CLNC DEL 125.0 (When tower closed)	UNICOM 122.95
---------------------------	---------------------------------------	--	-------------------------	---	-------------------------



ELEV 1409	TDZE 1409
------------------	------------------



CATEGORY	A	B	C	D
LPV DA		1659-3/4	250 (300-3/4)	
LNAV/VNAV DA		1659-3/4	250 (300-3/4)	
LNAV MDA		1780-1	371 (400-1)	
C CIRCLING	1820-1 411 (500-1)	2120-1 711 (800-1)	2120-2 711 (800-2)	2120-2 1/4 711 (800-2 1/4)

NC-2, 16 MAY 2024 to 13 JUN 2024

NC-2, 16 MAY 2024 to 13 JUN 2024