

ILS or LOC RWY 30

| | | |
|---------------------------|-------------------------|--|
| LOC I-NSI 109.7 | APCH CRS 301° | Rwy Idg 10,002 TDZE 506 Arprt Elev 506 |
|---------------------------|-------------------------|--|

AL-5162 [USN]

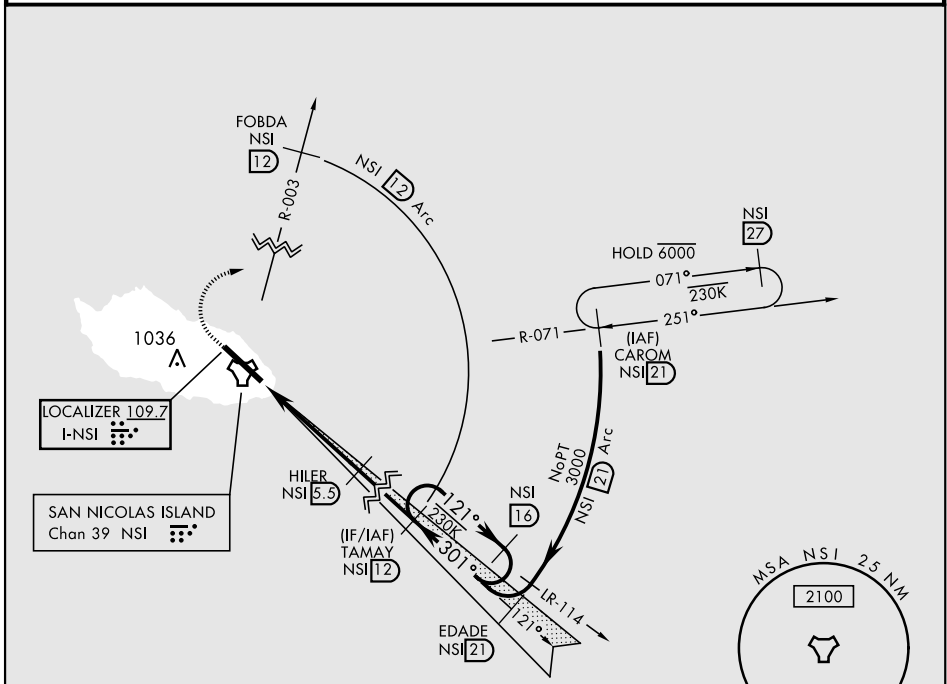
SAN NICOLAS ISLAND NOLF (KNSI)

DME required for ILS procedure. RADAR or TACAN required.

MISSED APPROACH: Climb to 1000 via heading 301°, then climbing right turn to 3000 to intercept NSI R-003 to FOBDA, then arc E of NSI 12 mile arc to TAMAY and hold.

* Circling not authorized W of Rwy 12-30.

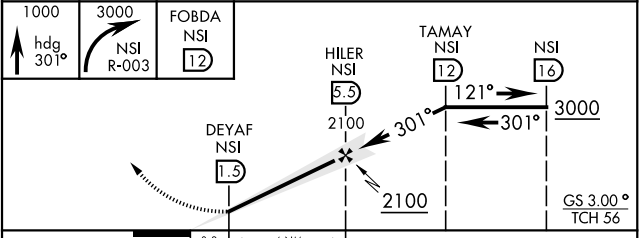
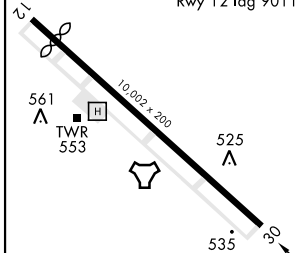
TOWER ★
126.85 379.3



EMERG SAFE ALT 100 NM 10,900

| | |
|----------|----------|
| ELEV 506 | TDZE 506 |
|----------|----------|

Rwy 12 Idg 9011'



| CATEGORY | A | B | C | D | E |
|------------------|----------------------|----------------------|------------------------|--------------------|---|
| S-ILS 30 | | 706-¾ | 200 | (200-¾) | |
| S-LOC 30 | | 780-1 | 274 | (300-1) | |
| CIRCLING* | 860-1 354 (400-1) | 960-1 454 (500-1) | 960-1½ 454 (500-1½) | 1060-2 554 (600-2) | |

ILS or LOC RWY 30

SW-3, 16 MAY 2024 to 13 JUN 2024

SW-3, 16 MAY 2024 to 13 JUN 2024