

NEWTON, IOWA

AL-5233 (FAA)

21336

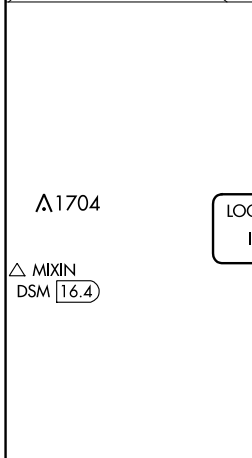
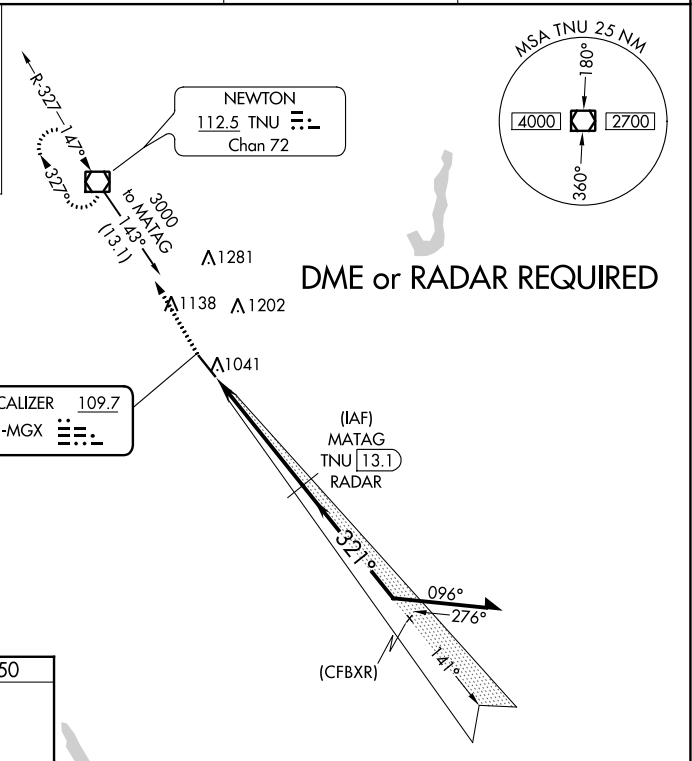
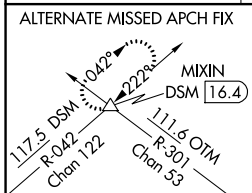
LOC I-MGX <b>109.7</b>	APP CRS <b>321°</b>	Rwy Idg TDZE Apt Elev	<b>5600</b> <b>950</b> <b>953</b>
---------------------------	------------------------	-----------------------------	---

# ILS or LOC RWY 32

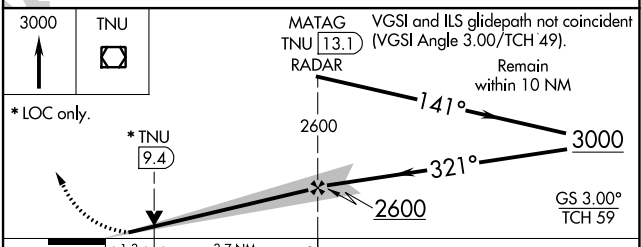
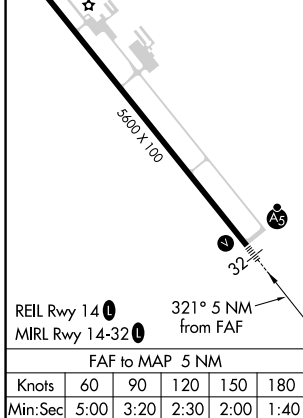
NEWTON MUNI-EARL JOHNSON FLD (TNU)

NA For inop MALSRS, increase ILS all Cats visibility to 7/8 SM.	MALSRS MISSED APPROACH: Climb to 3000 direct TNU VOR/DME and hold.
---	---

AWOS-3 <b>132.275</b>	DES MOINES APP CON <b>123.9 307.15</b>	CLNC DEL <b>126.3</b>	UNICOM <b>122.8 (CTAF)</b>
--------------------------	---	--------------------------	-------------------------------



ELEV 953	TDZE 950
----------	----------



CATEGORY	A	B	C	D
S-ILS 32	1150-½ 200 (200-½)			
S-LOC 32	1400-½ 450 (500-½)	1400-7/8 450 (500-7/8)		
CIRCLING	1420-1 467 (500-1)	1440-1 487 (500-1)	1520-1½ 567 (600-1½)	1600-2 647 (700-2)

NEWTON, IOWA  
Amdt 3 24MAY18

NEWTON MUNI-EARL JOHNSON FLD (TNU)  
41°40'N-93°01'W

# ILS or LOC RWY 32

NC-3, 16 MAY 2024 to 13 JUN 2024

NC-3, 16 MAY 2024 to 13 JUN 2024