

|  |                        |  |
|--|------------------------|--|
| WAAS<br>CH <b>69439</b><br><b>W17A</b> | APP CRS<br><b>167°</b> | Rwy Idg<br>TDZE <b>5999</b><br><b>541</b><br>Apt Elev <b>550</b> |
|--|------------------------|--|

# RNAV (GPS) RWY 17

OUTLAW FLD (CKV)

RNP APCH - GPS.

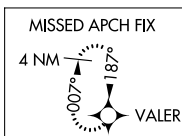
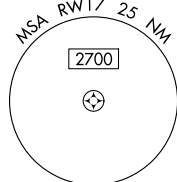
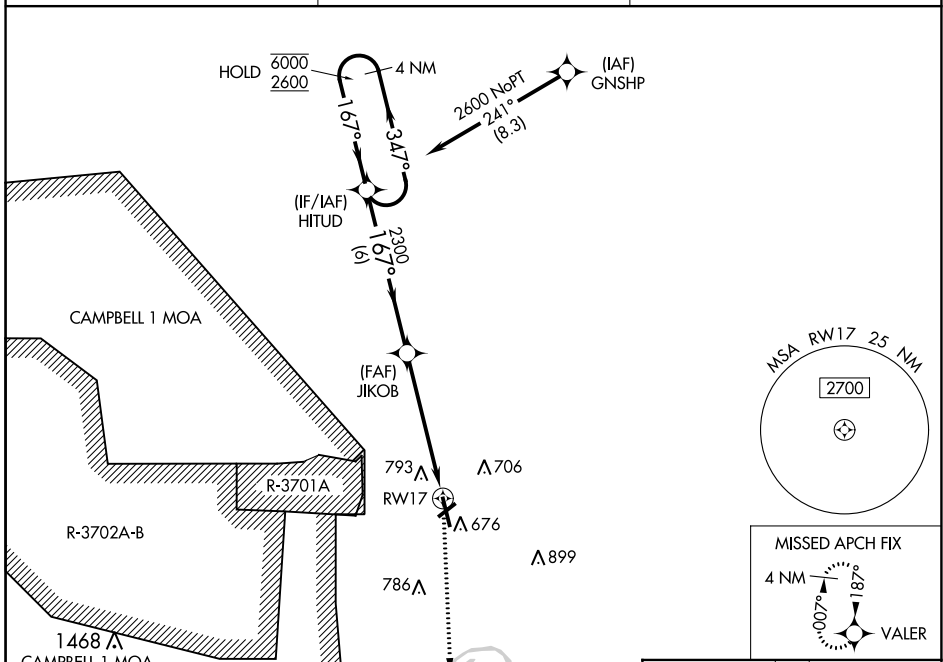
**⚠** Circling NA W of Rwy 17-35. Circling Rwy 23 NA at night. Rwy 17 helicopter visibility reduction below 3/4 SM NA. For uncompensated Baro-VNAV systems, LNAV/VNAV NA below -12°C or above 54°C.

**MISSED APPROACH:**  
Climb to 3000 direct VALER and hold.

ASOS  
**134.575**

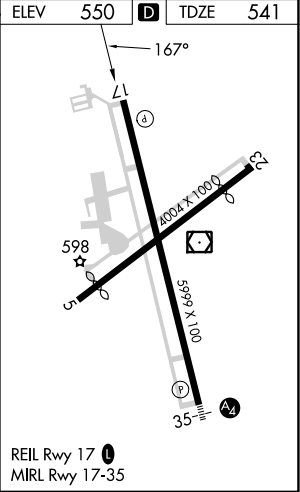
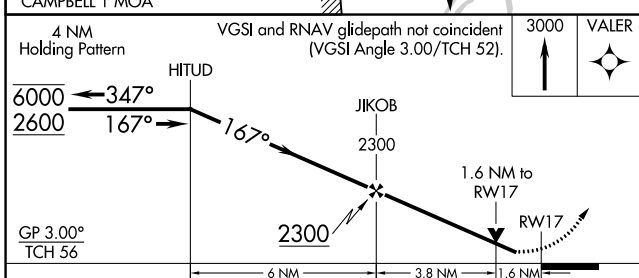
CAMPBELL APP CON  
**134.35 307.025**

UNICOM  
**122.8 (CTAF) 0**



SE-1, 16 MAY 2024 to 13 JUN 2024

SE-1, 16 MAY 2024 to 13 JUN 2024



| CATEGORY          | A        | B           | C              | D                     |
|-------------------|----------|-------------|----------------|-----------------------|
| LPV DA            | 823-7/8  |             | 282 (300-7/8)  |                       |
| LNAV/VNAV DA      | 991-13/8 |             | 450 (500-13/8) |                       |
| LNAV MDA          | 1060-1   | 519 (600-1) | 1060-13/8      | 519 (600-13/8)        |
| <b>C</b> CIRCLING | 1060-1   | 510 (600-1) | 1060-11/2      | 1200-2<br>650 (700-2) |