

WAAS CH 58300 W35A	APP CRS 347°	Rwy Idg 5999 TDZE 550 Apt Elev 550
--	------------------------	---

RNAV (GPS) RWY 35

OUTLAW FLD (CKV)

RNP APCH - GPS.

⚠ Circling Rwy 5, 17, 23 NA at night. Baro-VNAV and VDP NA when using Campbell AAF (Fort Campbell) altimeter setting. Rwy 35 helicopter visibility reduction below $\frac{3}{4}$ SM NA. Inop table does not apply to LPV all Cats. For uncompensated Baro-VNAV systems, LNAV/VNAV NA below -13°C or above 54°C. Circling NA W of Rwy 17-35. For inop ALS, increase LNAV/VNAV all Cats visibility to $\frac{7}{8}$ SM. When local altimeter setting not received, use Campbell AAF (Fort Campbell) altimeter setting.

MALS

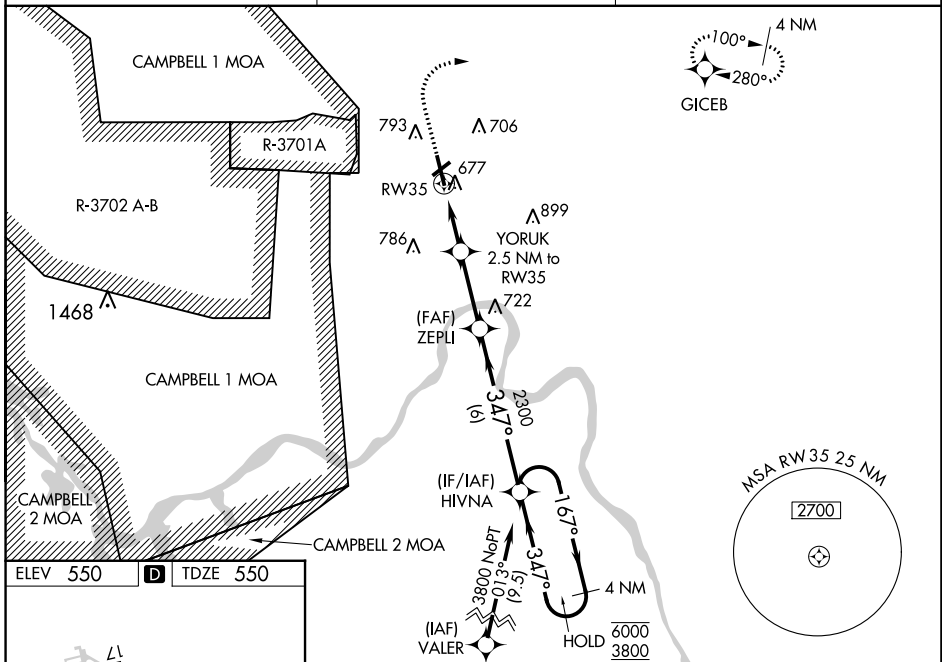


MISSED APPROACH:
Climb to 1000 then climbing right turn to 3000 direct GICEB and hold.

ASOS
134.575

CAMPBELL APP CON
134.35 307.025

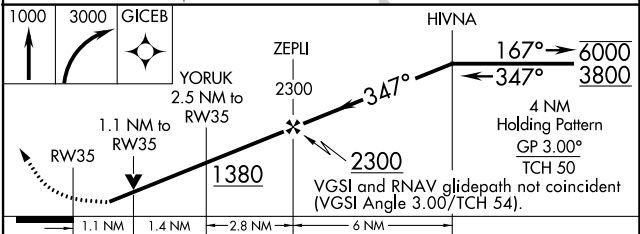
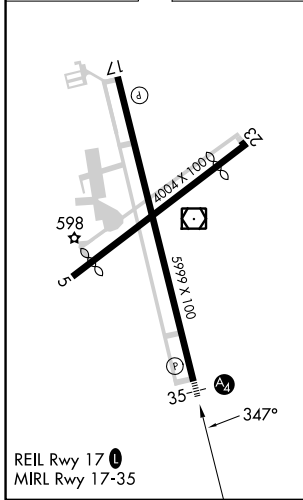
UNICOM
122.8 (CTAF) 0



SE-1, 16 MAY 2024 to 13 JUN 2024

SE-1, 16 MAY 2024 to 13 JUN 2024

ELEV 550 **D** TDZE 550



CATEGORY	A	B	C	D
LPV DA		805- $\frac{3}{4}$	255 (300- $\frac{3}{4}$)	
LNAV/VNAV DA		838- $\frac{3}{4}$	288 (300- $\frac{3}{4}$)	
LNAV MDA	940- $\frac{3}{4}$	390 (400- $\frac{3}{4}$)	940- $\frac{7}{8}$	390 (400- $\frac{7}{8}$)
C CIRCLING	1000-1 450 (500-1)	1020-1 470 (500-1)	1020-1 $\frac{1}{2}$ 470 (500-1 $\frac{1}{2}$)	1200-2 650 (700-2)