

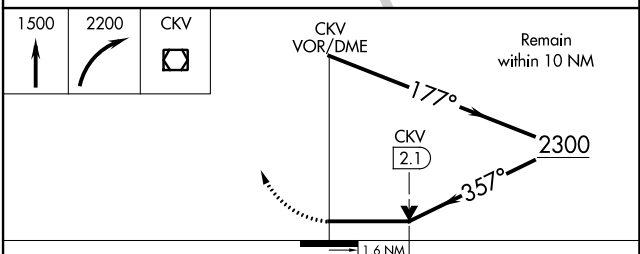
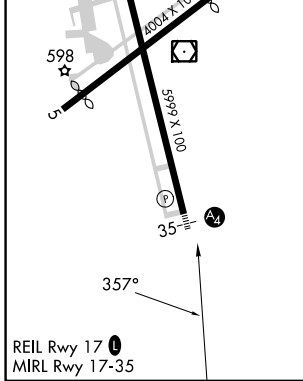
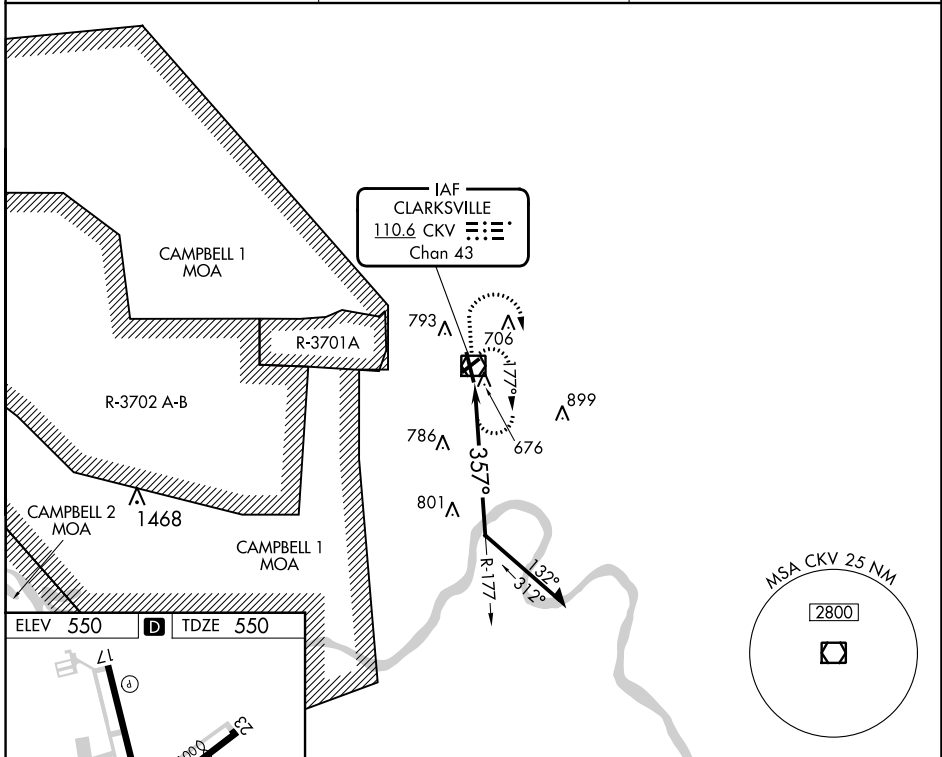
VOR/DME CKV 110.6 Chan 43	APP CRS 357°	Rwy Idg TDZE Apt Elev	5999 550 550
---	------------------------	-----------------------------	---

VOR RWY 35

OUTLAW FLD (CKV)

RADAR required for procedure entry.		MALS 	MISSED APPROACH: Climb to 1500 then climbing right turn to 2200 direct CKV VOR/DME and hold.
Circling NA W of Rwy 17-35. Circling Rwy 5, 17, 23 NA at night. Rwy 35 helicopter visibility reduction below 3/4 SM NA. When local altimeter setting not received, use Campbell AAF (Fort Campbell) altimeter setting.			

ASOS 134.575	CAMPBELL APP CON 134.35 307.025	UNICOM 122.8 (CTAF)
------------------------	---	-------------------------------



CATEGORY	A	B	C	D
S-35	1120-1 570 (600-1)		1120-1½ 570 (600-1½)	1120-1¾ 570 (600-1¾)
CIRCLING	1120-1 570 (600-1)		1120-1⅝ 570 (600-1⅝)	1200-2 650 (700-2)

SE-1, 16 MAY 2024 to 13 JUN 2024

SE-1, 16 MAY 2024 to 13 JUN 2024