

APP CRS	Rwy Idg	3502
255°	TDZE	8
	Apt Elev	8

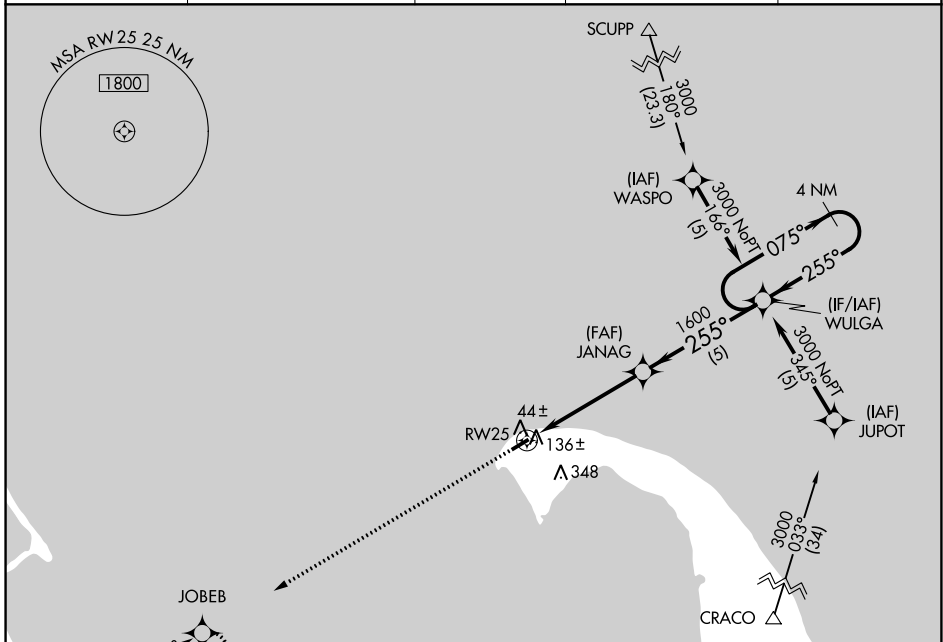
RNAV (GPS) RWY 25

PROVINCETOWN MUNI (PVC)

⚠ DME/DME RNP-0.3 NA. When local altimeter setting not received, use Hyannis altimeter setting and increase all MDA 80 feet. Rwy 25 helicopter visibility reduction below 1 SM NA. Straight-in Rwy 25 NA at night, Circling Rwy 25 NA at night.

⚠ MISSED APPROACH: Climb to 3000 direct JOBEB and hold.

AWOS-3PT 119.275	BOSTON APP CON ★ 118.2	CLNC DEL 120.65	UNICOM 122.8 (CTAF)	122.85 Ⓛ
----------------------------	----------------------------------	---------------------------	-------------------------------	------------------------



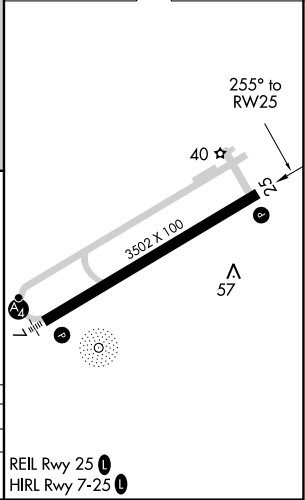
NE-1, 16 MAY 2024 to 13 JUN 2024

NE-1, 16 MAY 2024 to 13 JUN 2024

ELEV 8	TDZE 8
---------------	---------------



3000	JOBEB	VGSI and descent angles not coincident (VGSI Angle 3.00/TCH 40).	4 NM Holding Pattern
↑	✧		
RW25		JANAG	WULGA
↘ 255°		↗ 075°	↖ 255°
↘ 3.06° TCH 30		↗ 1600	↖ 3000
← 4.8 NM		← 5 NM	



CATEGORY	A	B	C	D
LNAV MDA	400-1	392 (400-1)		NA
CIRCLING	460-1 452 (500-1)	660-1 652 (700-1)		NA

REIL Rwy 25 **Ⓛ**
HIRL Rwy 7-25 **Ⓛ**