

WAAS CH 86738 W07A	APP CRS 075°	Rwy Idg TDZE Apt Elev	3502 8 8
---------------------------------	------------------------	-----------------------------	-------------------------------------

RNAV (GPS) RWY 7

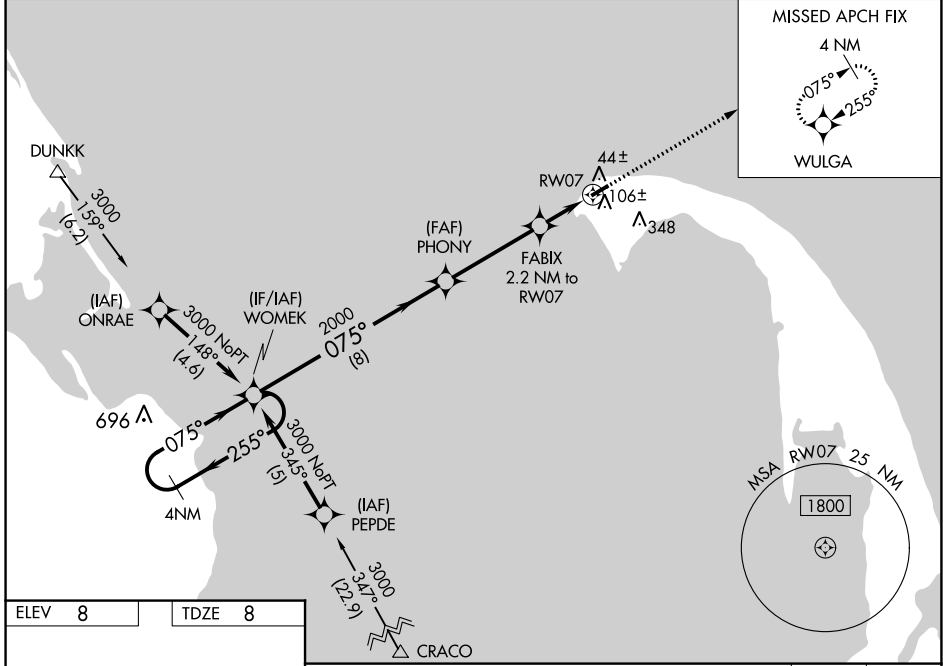
PROVINCETOWN MUNI (PVC)

⚠ For uncompensated Baro-VNAV systems, LNAV/VNAV NA below -15°C (5°F) or above 54°C (130°F). DME/DME RNP-0.3 NA. Inop table does not apply to LPV Cats A and B. When local altimeter setting not received, use Hyannis altimeter setting: increase LPV DA to 271, increase LNAV/VNAV DA to 331, and Cat A/B visibility 1/8 mile and all MDA 80 feet. For inop MALSF when using Hyannis altimeter setting, increase LPV Cat A/B visibility to 7/8 mile. Baro-VNAV and VDP NA when using Hyannis altimeter setting.

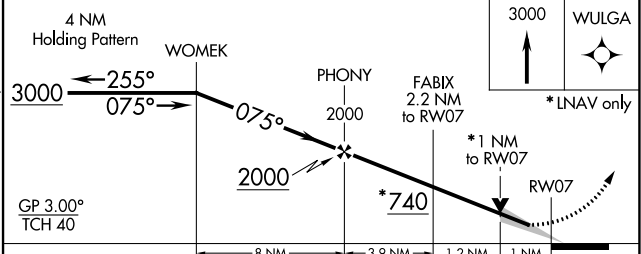
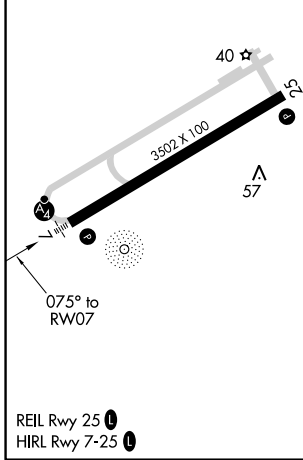
MALSF

MISSED APPROACH:
Climb to 3000 direct WULGA and hold.

AWOS-3PT 119.275	BOSTON APP CON ★ 118.2	CLNC DEL 120.65	UNICOM 122.8 (CTAF)	122.85 ⓪
----------------------------	----------------------------------	---------------------------	-------------------------------	------------------------



ELEV 8	TDZE 8
---------------	---------------



	A	B	C	D
LPV DA	208-3/4	200 (200-3/4)		NA
LNAV/VNAV DA	268-3/4	260 (300-3/4)		NA
LNAV MDA	360-3/4	352 (400-3/4)		NA
⓪ CIRCLING	460-1 452 (500-1)	660-1 652 (700-1)		NA

NE-1, 16 MAY 2024 to 13 JUN 2024

NE-1, 16 MAY 2024 to 13 JUN 2024