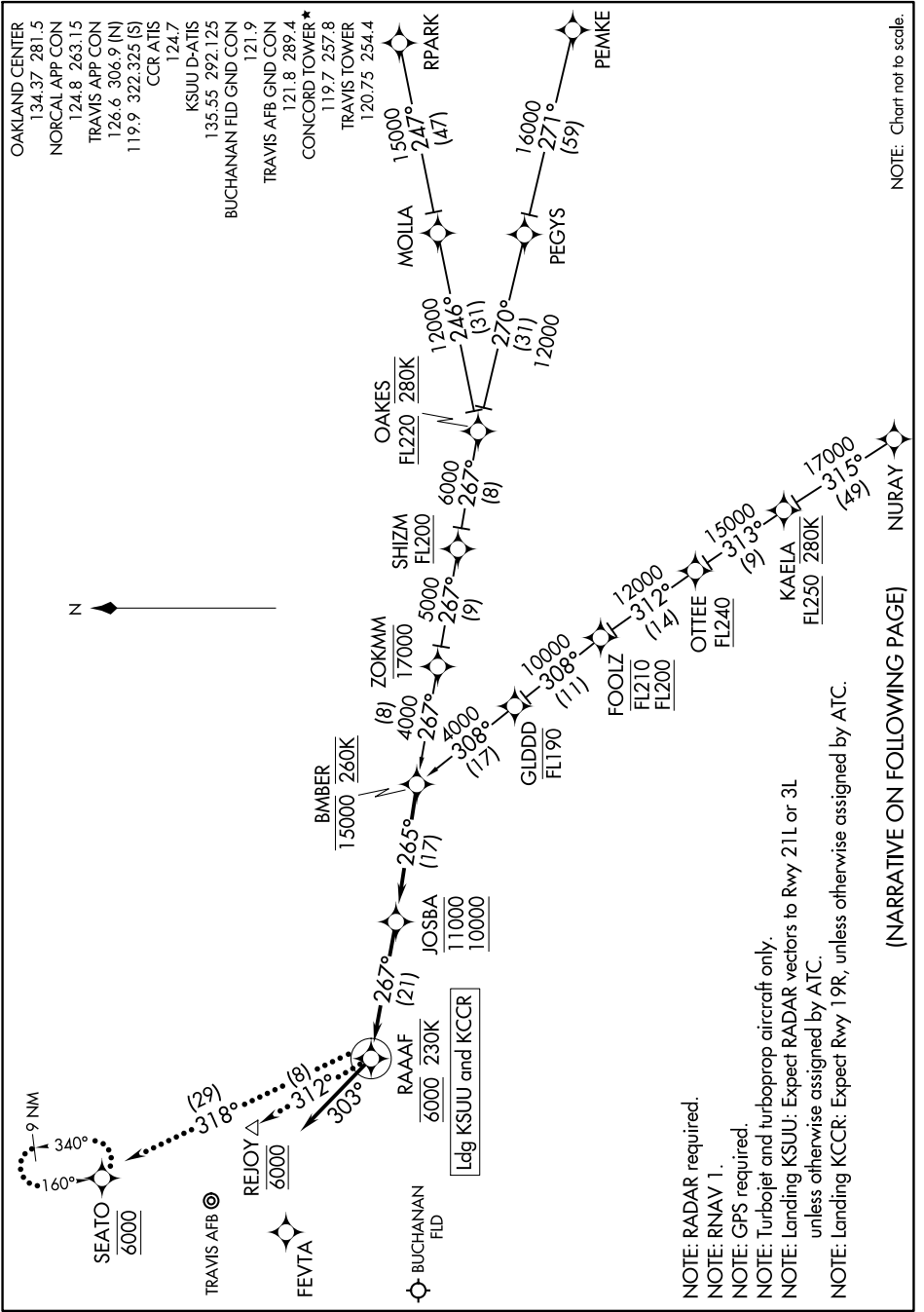


BMBER ONE ARRIVAL (RNAV)

AL-5320 (FAA)

CONCORD, CALIFORNIA

SW-2, 16 MAY 2024 to 13 JUN 2024



BMBER ONE ARRIVAL (RNAV)

CONCORD, CALIFORNIA

NOTE: RADAR required.
 NOTE: RNAV 1.
 NOTE: GPS required.
 NOTE: Turbojet and turboprop aircraft only.
 NOTE: Landing KSUU: Expect RADAR vectors to Rwy 21L or 3L unless otherwise assigned by ATC.
 NOTE: Landing KCCR: Expect Rwy 19R, unless otherwise assigned by ATC.

(NARRATIVE ON FOLLOWING PAGE)

NOTE: Chart not to scale.

SW-2, 16 MAY 2024 to 13 JUN 2024