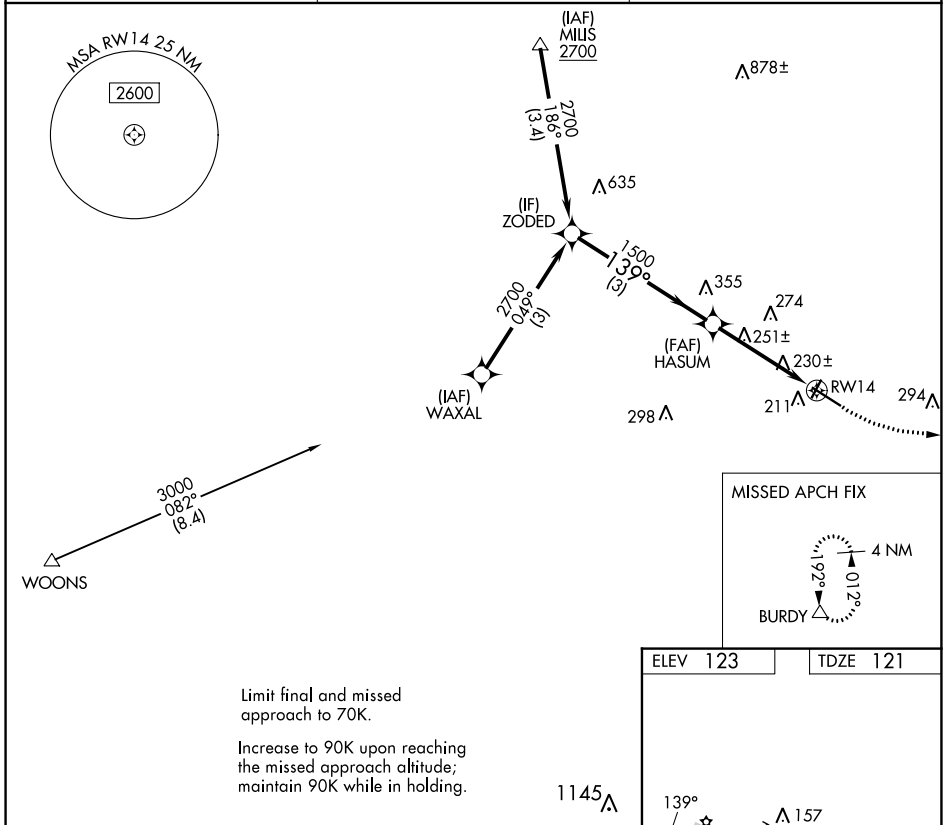


WAAS CH 50444 W14B	APP CRS 139°	Rwy ldg TDZE 121 Apt Elev 123	2991
--	------------------------	---	-------------

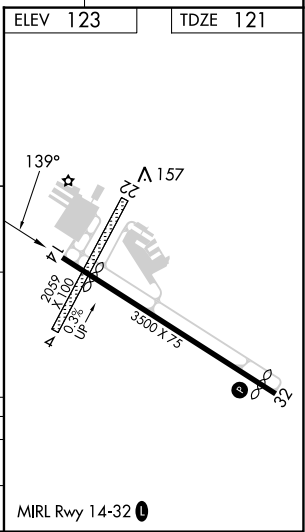
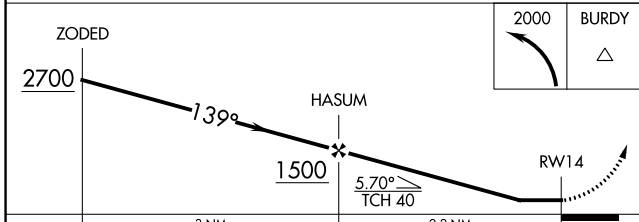
COPTER RNAV (GPS) Y RWY 14

MANSFIELD MUNI (1B9)

RNP APCH - GPS.		MISSED APPROACH: Climbing left turn to 2000 direct BURDY and hold.
<p>Procedure NA at night. Use Taunton altimeter setting.</p>		
TAN ASOS 132.675	BOSTON APP CON 124.1	UNICOM 123.0 (CTAF)



Limit final and missed approach to 70K.
Increase to 90K upon reaching the missed approach altitude; maintain 90K while in holding.



NE-1, 16 MAY 2024 to 13 JUN 2024

NE-1, 16 MAY 2024 to 13 JUN 2024