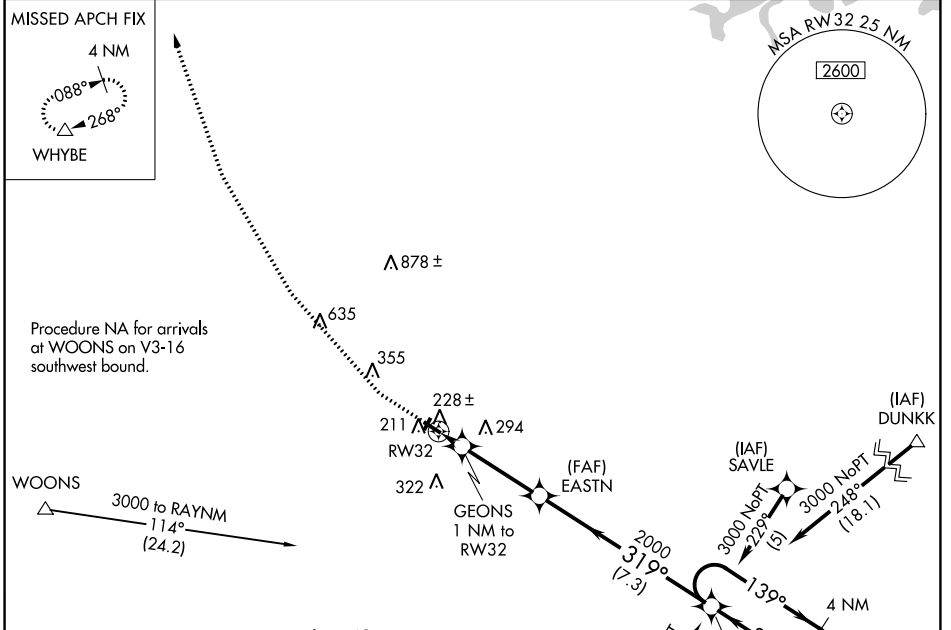


WAAS CH <b>97644</b> <b>W32A</b>	APP CRS <b>319°</b>	Rwy Idg TDZE Apt Elev	<b>3263</b> <b>121</b> <b>123</b>
--	------------------------	-----------------------------	---

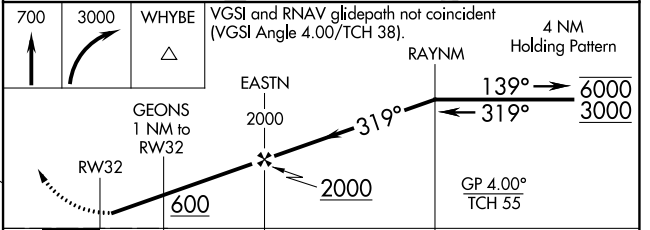
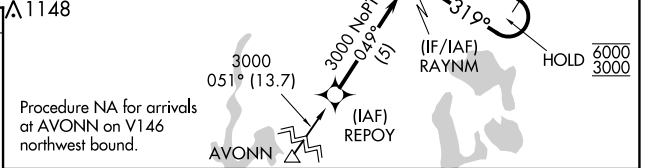
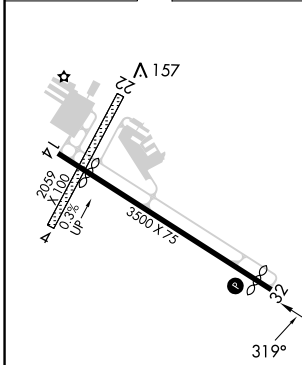
# RNAV (GPS) RWY 32

MANSFIELD MUNI (1B9)

RNP APCH - GPS.		MISSED APPROACH: Climb to 700 then climbing right turn to 3000 direct WHYBE and hold.
NA	Circling NA to Rwy 4 and 22. Procedure NA at night. Rwy 32 helicopter visibility reduction below 1 SM NA. Use Taunton altimeter setting.	
TAN ASOS <b>132.675</b>	BOSTON APP CON <b>124.1</b>	UNICOM <b>123.0 (CTAF) 0</b>



ELEV 123	TDZE 121
----------	----------



CATEGORY	A	B	C	D
LPV DA	452-1	331 (400-1)		NA
LNAV MDA	520-1	399 (400-1)		NA
CIRCLING	600-1 477 (500-1)	640-1 517 (600-1)		NA

NE-1, 16 MAY 2024 to 13 JUN 2024

NE-1, 16 MAY 2024 to 13 JUN 2024