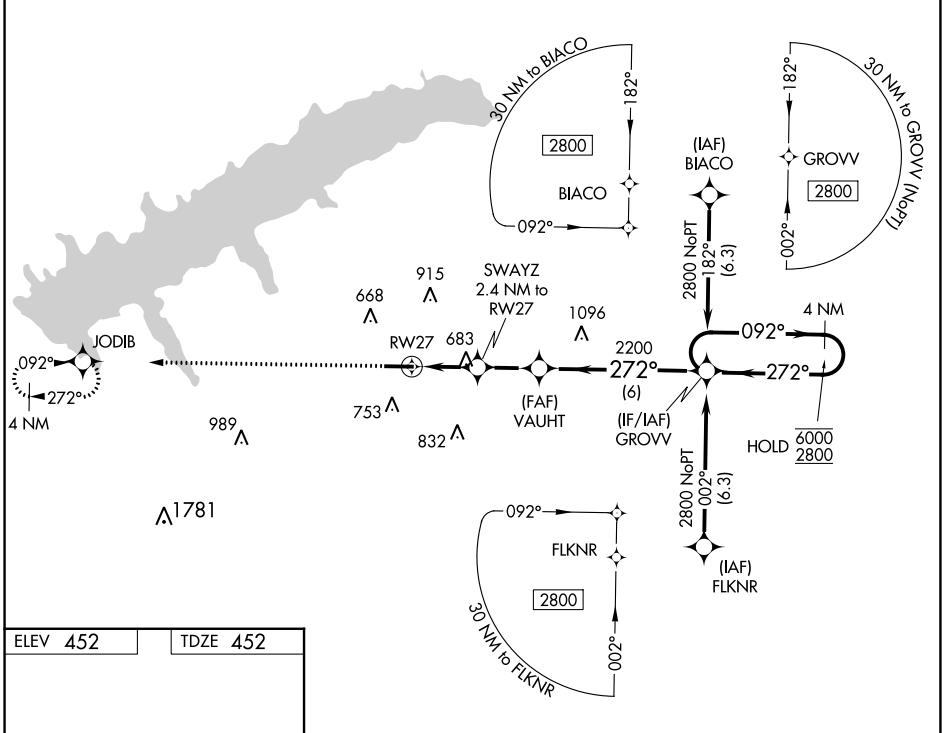


WAAS CH 63235 W27A	APP CRS 272°	Rwy Idg TDZE Apt Elev	5600 452 452
--	------------------------	-----------------------------	---

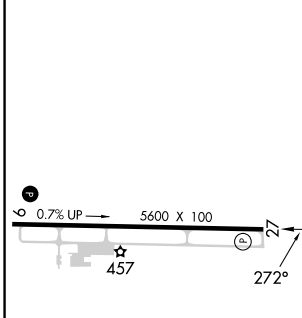
RNAV (GPS) RWY 27

UNIVERSITY-OXFORD (UOX)

RNP APCH - GPS.		MISSED APPROACH: Climb to 2800 direct JODIB and hold.	
Rwy 27 helicopter visibility reduction below 3/4 SM NA.			
AWOS-3PT 132.725	MEMPHIS CENTER 128.5 279.55	GCO 135.075	UNICOM 123.0 (CTAF) 0



ELEV 452	TDZE 452
-----------------	-----------------



2800	JODIB	VAUHT	GROV	4 NM Holding Pattern
↑	✧	✧	✧	
SWAYZ 2.4 NM to RWY 27	VAUHT	GROV	4 NM Holding Pattern	
1.1 NM to RWY 27	VAUHT	GROV	4 NM Holding Pattern	
1.1	1.3 NM	2.2 NM	6 NM	
0.7% UP	5600 X 100	457	272°	
1380	2200	6000	2800	
3.50° TCH 53	272°	092°	272°	
1.1	1.3 NM	2.2 NM	6 NM	
CATEGORY	A	B	C	D
LP MDA	940-1	488 (500-1)	940-1 ³ / ₈	488 (500-1 ³ / ₈)
LNAV MDA	940-1	488 (500-1)	940-1 ³ / ₈	488 (500-1 ³ / ₈)
CIRCLING	980-1 528 (600-1)	1060-1 608 (700-1)	1380-2 ¹ / ₂ 928 (1000-2 ¹ / ₂)	1380-2 ³ / ₄ 928 (1000-2 ³ / ₄)

OXFORD, MISSISSIPPI
MIRL Rwy 9-27
REIL Rwy 9 and 27

34°23'N-89°32'W

UNIVERSITY-OXFORD (UOX)

RNAV (GPS) RWY 27

SC-4, 16 MAY 2024 to 13 JUN 2024

SC-4, 16 MAY 2024 to 13 JUN 2024