

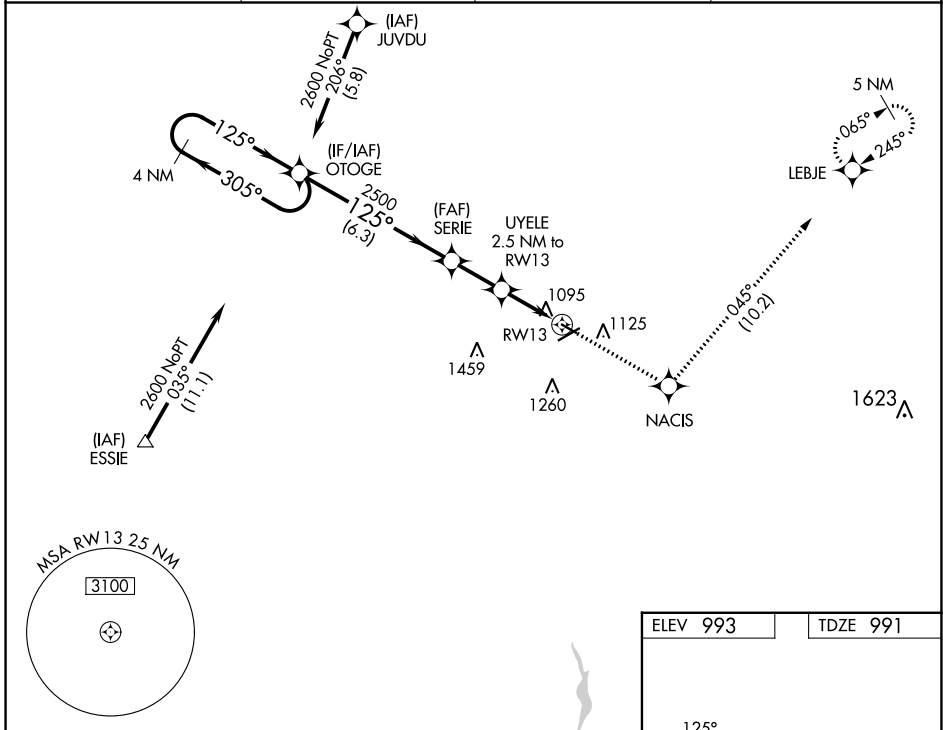
| | | |
|-------------|----------|-------------|
| APP CRS | Rwy Idg | 3498 |
| 125° | TDZE | 991 |
| | Apt Elev | 993 |

RNAV (GPS) RWY 13

MARION MUNI (MNN)

| | |
|---|--|
| RNP APCH. | MISSED APPROACH: Climb to 3000 direct NACIS and on track 045° to LEBJE and hold. |
| <p>▼ Rwy 13 helicopter visibility reduction below 3/4 SM NA. VDP NA when using Ohio State University altimeter setting. When local altimeter setting not received, use Ohio State University altimeter setting: increase all MDAs 100 feet and visibility Cat C/D 3/4 SM.</p> | |

| | | | |
|------------------------|--|--------------------------|---------------------------------|
| ASOS 119.975 | CLEVELAND APP CON * 124.2 360.65 | CLNC DEL 126.8 | UNICOM 122.8 (CTAF) 0 |
|------------------------|--|--------------------------|---------------------------------|



EC-2, 16 MAY 2024 to 13 JUN 2024

EC-2, 16 MAY 2024 to 13 JUN 2024

| | | | | | |
|--|--------------------|--------------------|----------------------|-----------------------|--|
| VGSi and descent angles not coincident (VGSi Angle 3.00/TCH 21). | | 3000 | NACIS | tr 045° | LEBJE |
| 4 NM Holding Pattern | | OTOGE | SERIE | UYELE 2.5 NM to RWY13 | 1.1 NM to RWY13 |
| 2600 | | 2500 | 1800 | 1800 | 1800 |
| ← 305° | | → 125° | ← 125° | ← 125° | ← 125° |
| 6.3 NM | | 2.1 NM | 1.4 NM | 1.1 NM | |
| CATEGORY | A | B | C | D | |
| LNVA MDA | 1360-1 369 (400-1) | | 1360-1¼ 369 (400-1¼) | | |
| CIRCLING | 1480-1 487 (500-1) | 1500-1 507 (600-1) | 1700-2 707 (800-2) | 1820-2¾ 827 (900-2¾) | REIL Rwy 7, 13, 25 and 31 0 MIRL Rwy 7-25 and 13-31 0 |

