

LOC/DME I-BFT 109.75 Chan 34 (Y)	APP CRS 245°	Rwy Idg 24R 24L TDZE 6003 5197 583 584 Apt Elev 584 584
--	------------------------	--

ILS or LOC RWY 24R

BURKE LAKEFRONT (BKL)

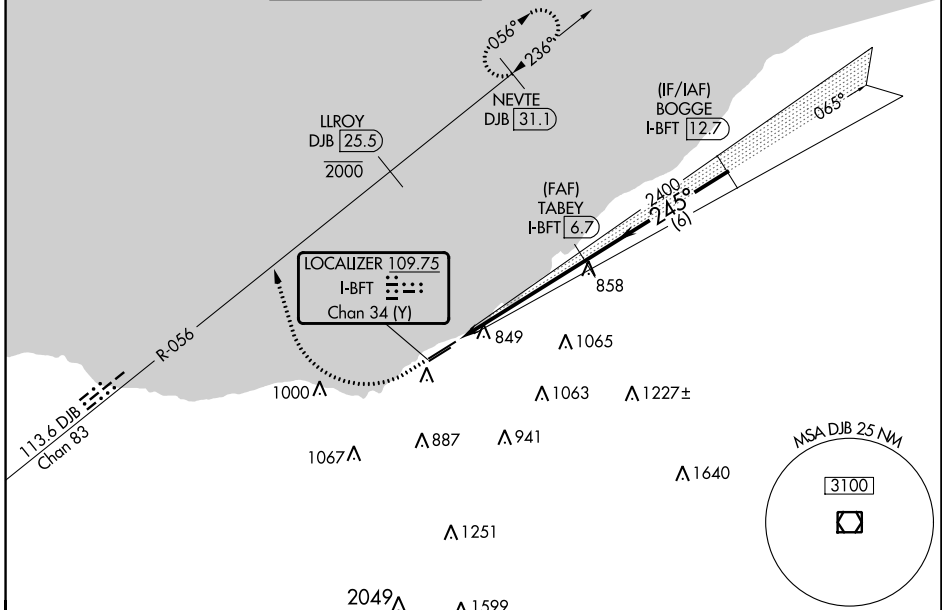
DME required. RADAR required for procedure entry.

▼ Circling Rwy 6R NA at night. Rwy 24R helicopter visibility reduction below 3/4 SM NA. Circling NA southeast of Rwy 6R-24L. S-ILS minimums NA when control tower closed.

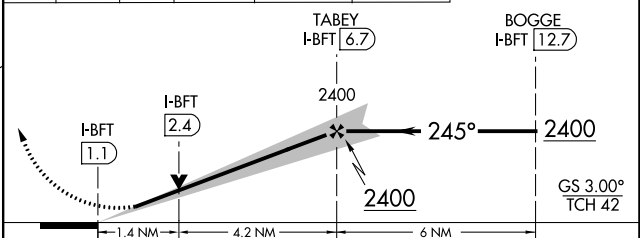
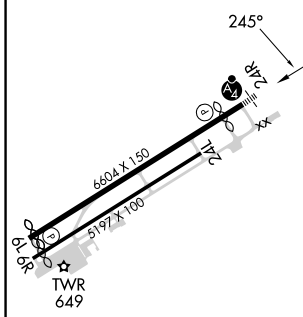
MALS F

MISSED APPROACH: Climb to 1120 then climbing right turn heading 350° and DJB VOR/DME R-056 to cross LLROY/DJB 25.5 DME at or below 2000 then climb to 3000 on DJB VOR/DME R-056 northeast course to NEVTE/DJB 31.1 DME and hold.

ATIS 125.25	CLEVELAND APP CON 125.35 346.325	LAKEFRONT TOWER ★ 124.3 (CTAF) 0 339.8	GND CON 121.9 339.8	CLNC DEL 339.8	CLNC DEL 121.9 (when twr closed)	UNICOM 122.95
-----------------------	--	---	-------------------------------	--------------------------	---	-------------------------



ELEV 584	D TDZE 24R 583 TDZE 24L 584	1120	↑ hdg 350°	DJB R-056	LLROY DJB 25.5 2000	3000	DJB R-056 NE crs	NEVTE DJB 31.1
----------	---------------------------------------	------	---------------	-----------	------------------------	------	------------------	----------------



CATEGORY	A	B	C	D
S-ILS 24R	916-3/4 333 (400-3/4)			
S-LOC 24R	1060-3/4	477 (500-3/4)	1060-1 1/8	477 (500-1 1/8)
SIDESTEP 24L	1060-1	476 (500-1)	1060-1 1/2	1060-2
CIRCLING	1060-1	476 (500-1)	1140-1 1/2	1200-2
			556 (600-1 1/2)	616 (700-2)

REIL Rwy 6L **1**
REIL Rwy 24L
HIRL Rwy 6L-24R **1**
HIRL Rwy 6R-24L

EC-2, 16 MAY 2024 to 13 JUN 2024

EC-2, 16 MAY 2024 to 13 JUN 2024