


| | | |
|----------------------------|------------------------|------------------------|
| LOC I-SQK 108.35 | APP CRS 185° | Rwy Idg 6503 |
| | | TDZE 866 |
| | | Apt Elev 866 |

ILS or LOC RWY 18

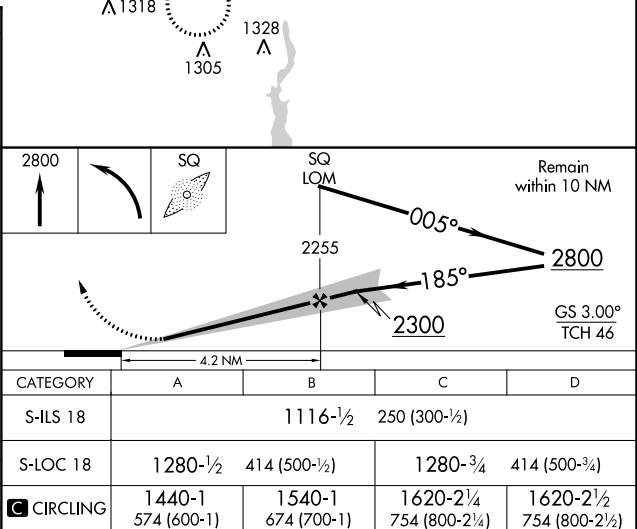
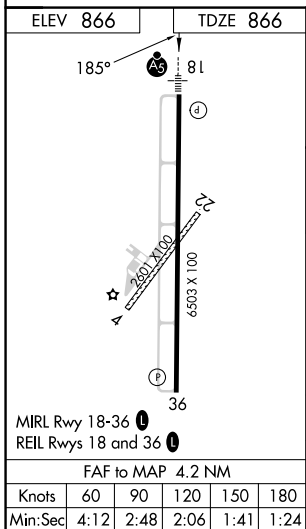
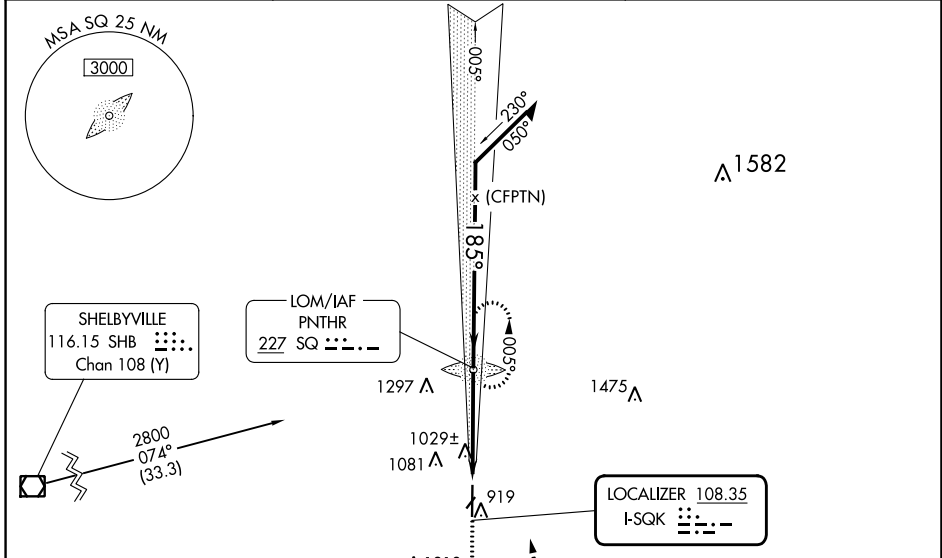
METTEL FLD (CEV)

ADF required.

NA Circling NA to Rwys 4 and 22. For inop MALS, increase S-LOC 18 Cats C/D visibility to 1½ mile. When local altimeter setting not received, use James M Cox Dayton Intl altimeter setting and increase ILS DA to 1237 feet and visibility all Cats to ¾ mile, increase all MDA 140 feet and LOC Cats C/D visibility to 1½ mile, and Circling Cat B visibility to 1¼ miles and Cat C to 2¾ miles and Cat D to 3 miles. When using James M Cox Dayton Intl altimeter setting: for inop MALS, increase S-ILS 18 all Cats visibility to 1 mile and increase S-LOC 18 Cat A/B visibility to 1 mile and Cat C/D to 1½ mile.

MALS  MISSED APPROACH: Climb to 2800 then left turn direct SQ LOM and hold.

| | | |
|--------------------------|--|---------------------------------|
| AWOS-3 118.325 | COLUMBUS APP CON 134.45 352.05 | UNICOM 122.8 (CTAF) 0 |
|--------------------------|--|---------------------------------|



EC-2, 16 MAY 2024 to 13 JUN 2024

EC-2, 16 MAY 2024 to 13 JUN 2024