

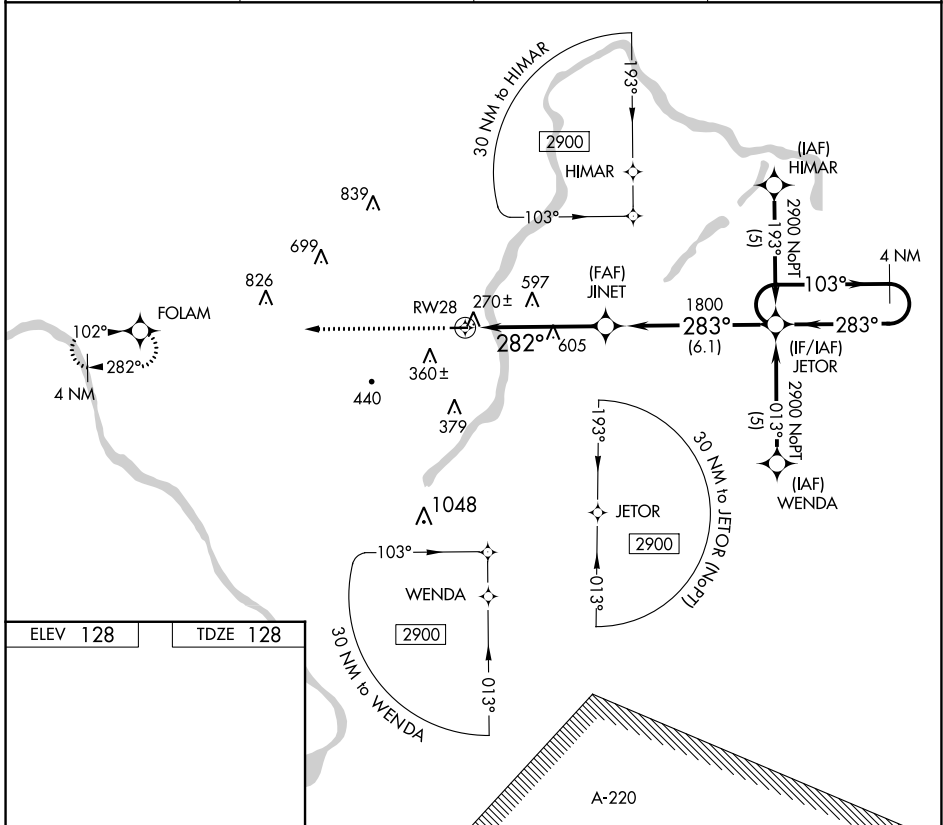
APP CRS 282°	Rwy Idg TDZE Apt Elev	3130 128 128
------------------------	-----------------------------	---

RNAV (GPS) RWY 28

PRINCETON (39N)

RNP APCH.	MISSED APPROACH: Climb to 2700 direct FOLAM and hold.
<p>▼ Use Trenton Mercer altimeter setting, if not received use Somerset altimeter setting. Procedure NA at night. Rwy 28 helicopter visibility reduction below 1 SM NA.</p> <p>▲NA</p>	

TTN ASOS 126.775	NEW YORK APP CON 132.8 379.9	UNICOM 122.725 (CTAF)	123.05 0
----------------------------	--	---------------------------------	------------------------



ELEV 128	TDZE 128
----------	----------

MIRL Rwy 10-28 **0**
REIL Rwy 10 **0**

2700 FOLAM VGSi and descent angles not coincident (VGSi Angle 3.00/TCH 41).

4 NM Holding Pattern

CATEGORY	A	B	C	D
LNVA MDA	900-1 772 (800-1)	900-1¼ 772 (800-1¼)	900-2¼ 772 (800-2¼)	NA

NE-2, 16 MAY 2024 to 13 JUN 2024

NE-2, 16 MAY 2024 to 13 JUN 2024