

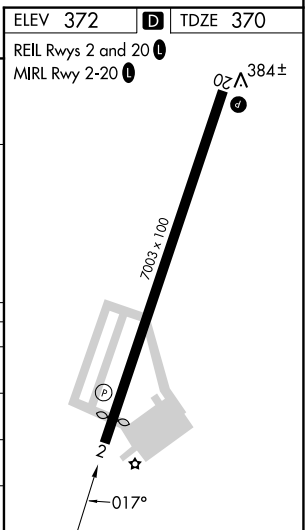
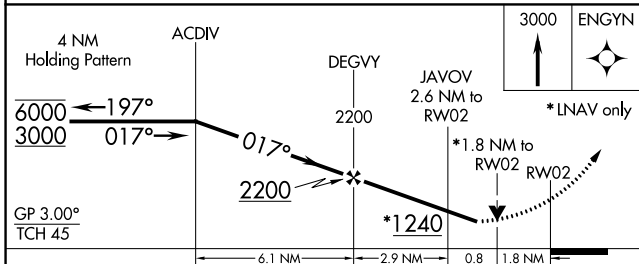
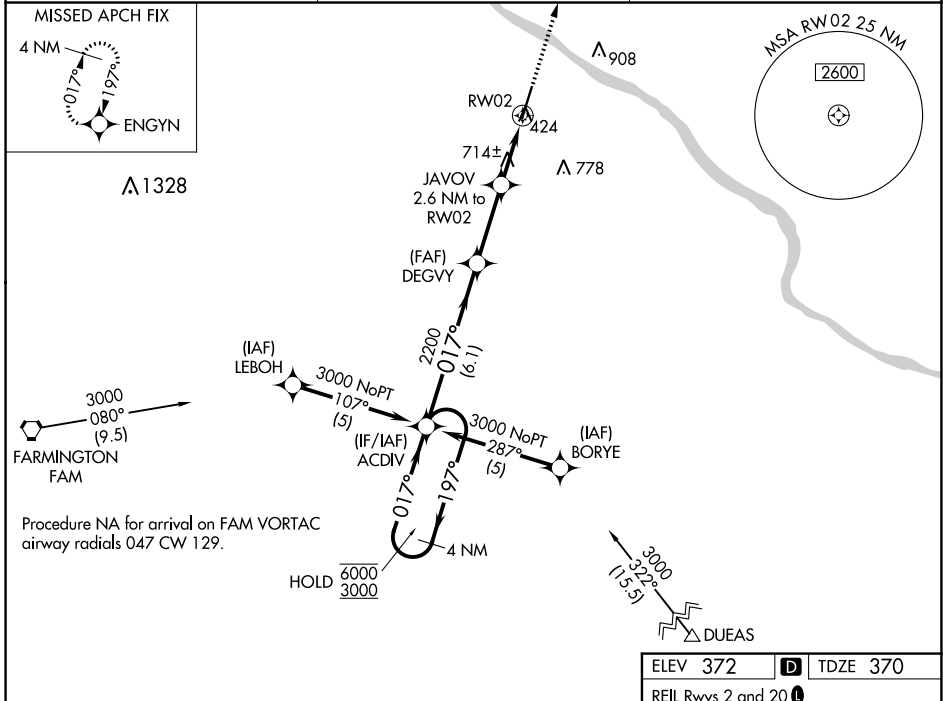
WAAS CH 93618 W02A	APP CRS 017°	Rwy Idg TDZE 370 Apt Elev 372
--	------------------------	---

RNAV (GPS) RWY 2

PERRYVILLE RGNL (PCD)

RNP APCH.	MISSED APPROACH: Climb to 3000 direct ENGYN and hold.
<p>▼ For uncompensated Baro-VNAV systems, procedure NA below 15°C or above 54°C. Rwy 2 helicopter visibility reduction below 3/4 SM NA.</p>	

AWOS-3PT 118.95	KANSAS CITY CENTER 127.475 346.275	UNICOM 122.8 (CTAF) 0
---------------------------	--	---------------------------------



CATEGORY	A	B	C	D
LPV DA		1123-3	753 (800-3)	
LNAV/VNAV DA		1186-3	816 (900-3)	
LNAV MDA	980-1	610 (700-1)	980-1 3/4	610 (700-1 3/4)
CIRCLING	980-1 608 (700-1)	1000-1 628 (700-1)	1260-2 3/4 888 (900-2 3/4)	1260-3 888 (900-3)

NC-3, 16 MAY 2024 to 13 JUN 2024

NC-3, 16 MAY 2024 to 13 JUN 2024