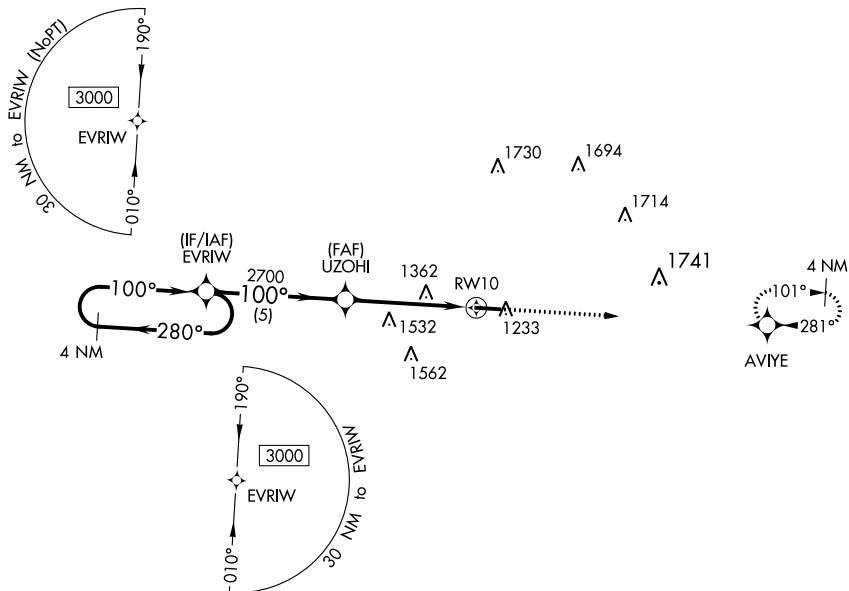


WAAS CH 77534 W10A	APP CRS 100°	Rwy Idg TDZE 1172 Apt Elev 1184	5000
--	------------------------	---	-------------

RNAV (GPS) RWY 10

HILLSDALE MUNI (JYM)

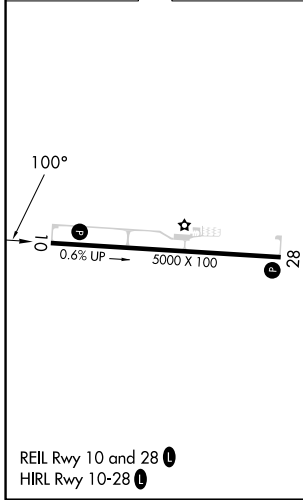
<p>▽ For uncompensated Baro-VNAV systems, LNAV/VNAV NA below -17°C (2°F) or above 54°C (130°F). DME/DME RNP-0.3 NA.</p>		<p>MISSED APPROACH: Climb to 3100 direct AVIYE and hold.</p>
<p>AWOS-3 121.025</p>	<p>TOLEDO APP CON 134.35 317.55</p>	<p>UNICOM 122.8 (CTAF) 0</p>



EC-1, 16 MAY 2024 to 13 JUN 2024

EC-1, 16 MAY 2024 to 13 JUN 2024

ELEV 1184	TDZE 1172
-----------	-----------



4 NM Holding Pattern		EVRIW	UZOHI	3100	AVIYE
3000		280°	100°	2700	*LNAV only
GP 3.00°		*1.6 NM to RWY 10		*LNAV only	
TCH 46		5 NM	3.1 NM	1.6 NM	
CATEGORY	A	B	C	D	
LPV DA	1441-1		269 (300-1)		NA
LNAV/VNAV DA	1601-1½		429 (500-1½)		NA
LNAV MDA	1720-1	548 (600-1)		1720-1⅝	548 (600-1⅝)
C CIRCLING	1720-1	536 (600-1)		1720-1⅝	536 (600-1⅝)