

LOC/DME I-MDK 111.75 Chan 54 (Y)	APP CRS 168°	Rwy ldg 8605 TDZE 27 Apt Elev 27
---	------------------------	---

ILS or LOC RWY 17L

SACRAMENTO INTL (SMF)

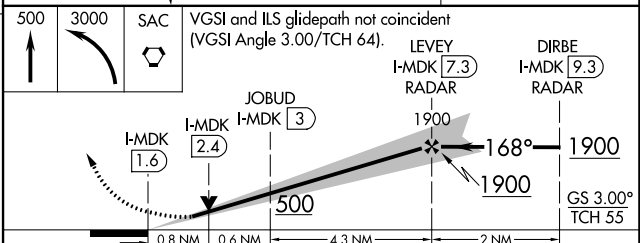
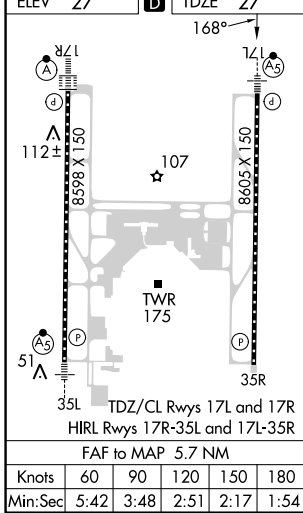
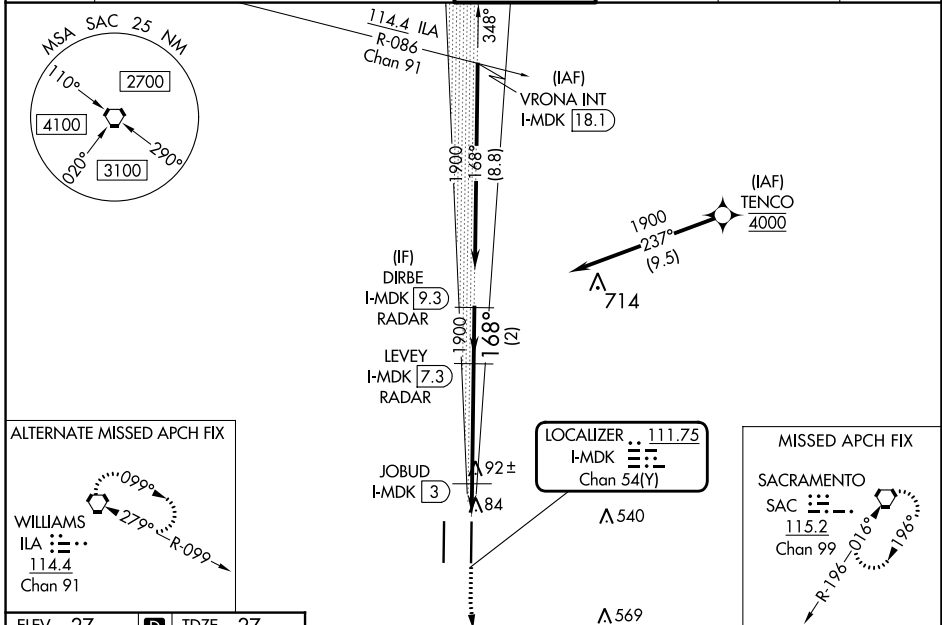
Aircraft not GPS equipped - RADAR required for procedure entry.
DME or RADAR required. RNP APCH-GPS. From TENCO.

MAJSLR

MISSED APPROACH: Climb to 500 then climbing left turn to 3000 direct SAC VORTAC and hold.

Simultaneous approach authorized. Circling NA west of Rwy 17L-35R.
For inop ALS, increase S-LOC 17L Cat C/D visibility to 1 3/8 SM and JOBUD fix minimums S-LOC 17L Cat C/D visibility to RVR 4500.

D-ATIS 126.75	NORCAL APP CON 125.4 259.1 (W-NE) 125.25 257.9 (SW) 127.4 317.5 (E-SE)	CAPITOL TOWER 125.7 256.7	GND CON 121.7 256.7	CLNC DEL 121.1 256.7	CPDLC
-------------------------	--	-------------------------------------	-------------------------------	--------------------------------	-------



CATEGORY	A	B	C	D
S-ILS 17L	227/18 200 (200-1/2)			
S-LOC 17L	500/24	473 (500-1/2)	500/50	473 (500-1)
C CIRCLING	500-1	473 (500-1)	500-1 1/2 473 (500-1 1/2)	840-2 3/4 813 (900-2 3/4)
JOBUD FIX MINIMUMS (DME REQUIRED)				
S-LOC 17L	340/24 313 (400-1/2)			
C CIRCLING	400-1 373 (400-1)	480-1 453 (500-1)	480-1 1/2 453 (500-1 1/2)	840-2 3/4 813 (900-2 3/4)

SW-2, 16 MAY 2024 to 13 JUN 2024

SW-2, 16 MAY 2024 to 13 JUN 2024