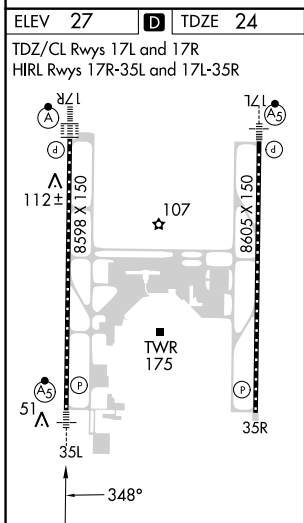
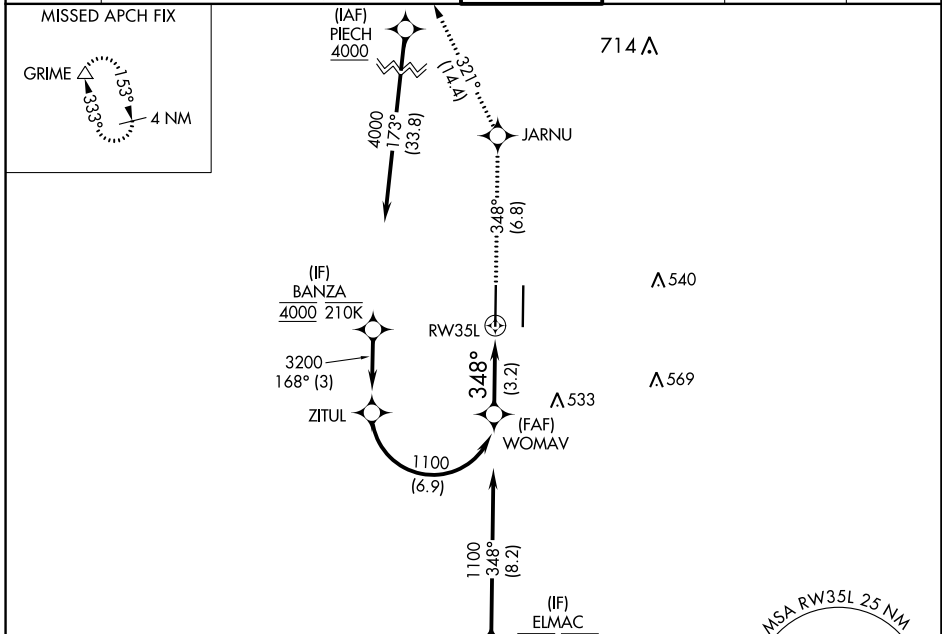


| | | |
|-------------|----------|-------------|
| APP CRS | Rwy Idg | 8598 |
| 348° | TDZE | 24 |
| | Apt Elev | 27 |

RNAV (RNP) Z RWY 35L

SACRAMENTO INTL (SMF)

| | | | | | |
|---|--|--------------------|---|--------------------|-------|
| RNP AR APCH-GPS. | | MALSR | MISSED APPROACH: Climb to 2000 on track 348° to JARNU and track 321° to GRIME and hold. | | |
| ▼ For uncompensated Baro-VNAV systems, procedure NA below -2°C or above 54°C. For inop ALS, increase RNP 0.12 all Cats visibility to RVR 4500; increase RNP 0.30 all Cats visibility to RVR 5500. | | | | | |
| D-ATIS | NORCAL APP CON | CAPITOL TOWER | GND CON | CLNC DEL | CPDLC |
| 126.75 | 125.4 259.1 (W-NE) 125.25 257.9 (SW) 127.4 317.5 (E-SE) | 125.7 256.7 | 121.7 256.7 | 121.1 256.7 | |



| | | | | |
|--|---|---|---------------|---------|
| VGSi and RNAV glidepath not coincident (VGSi Angle 3.00/TCH 76). | | 2000 | JARNU | GRIME |
| WOMAV | | ↑ tr 348° | | tr 321° |
| 1100 | | See planview for multiple IF locations. | | |
| GP 3.00° | | RW35L | | |
| TCH 59 | | 3.2 NM | | |
| CATEGORY | A | B | C | D |
| RNP 0.12 DA | | 318/24 | 294 (300-1/2) | |
| RNP 0.30 DA | | 382/30 | 358 (400-5/8) | |
| AUTHORIZATION REQUIRED | | | | |

SW-2, 16 MAY 2024 to 13 JUN 2024

SW-2, 16 MAY 2024 to 13 JUN 2024