

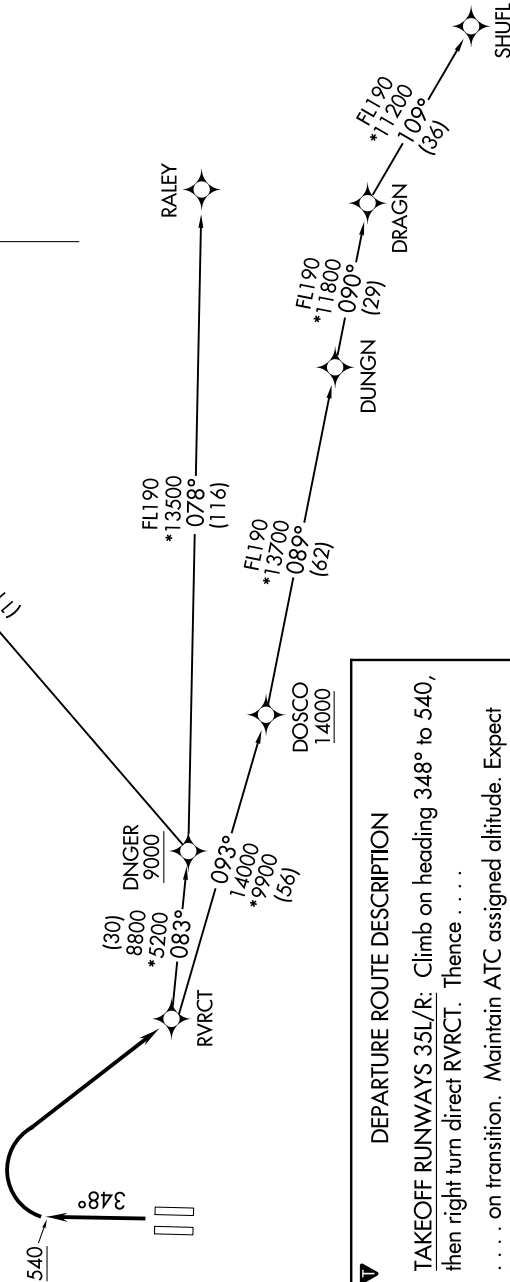
SW-2, 16 MAY 2024 to 13 JUN 2024

**TOP ALTITUDE:  
ASSIGNED BY ATC**

RNAV - DME/DME/IRU or GPS  
RADAR required for non-GPS equipped aircraft.

**TAKEOFF MINIMUMS**

Rwys 35L/R: Standard with minimum climb of 500' per NM to 540.



NORCAL DEP CON  
127.4 317.5

**DEPARTURE ROUTE DESCRIPTION**  
**TAKEOFF RUNWAYS 35L/R:** Climb on heading 348° to 540, then right turn direct RVRCT. Thence . . . . .  
 . . . . . on transition. Maintain ATC assigned altitude. Expect filed altitude 5 minutes after departure.  
MACUS TRANSITION (RVRCT4.MACUS)  
RALEY TRANSITION (RVRCT4.RALEY)  
SHUFL TRANSITION (RVRCT4.SHUFL)

NOTE: Chart not to scale.

SW-2, 16 MAY 2024 to 13 JUN 2024