

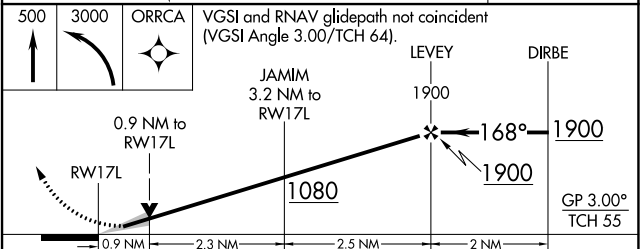
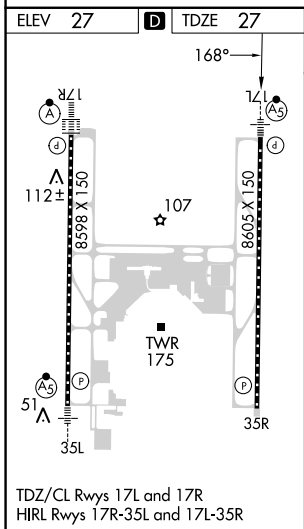
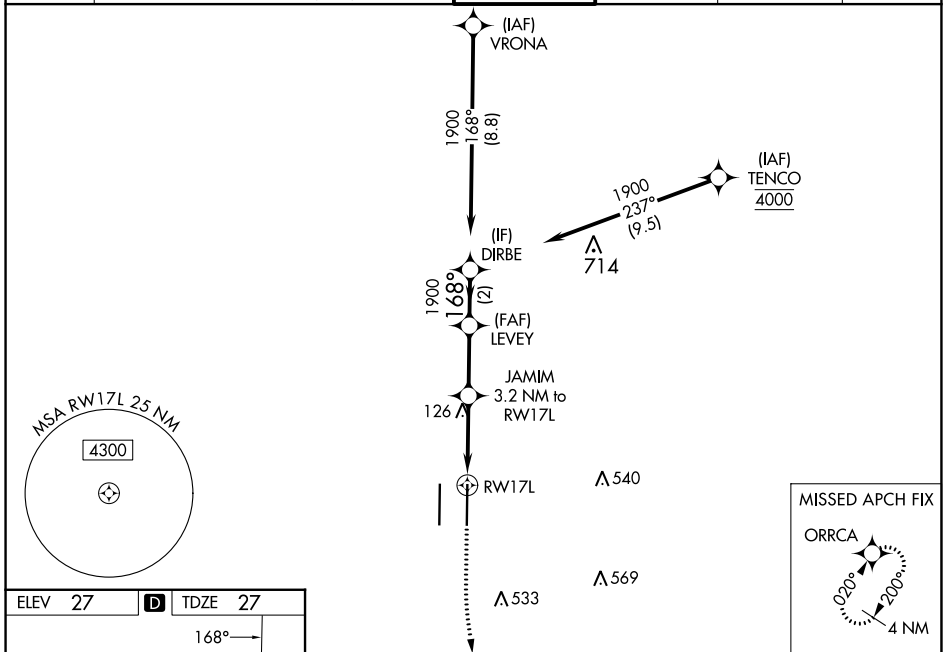
WAAS CH 78327 W17B	APP CRS 168°	Rwy Idg TDZE Apt Elev	8605 27 27
--	------------------------	-----------------------------	---------------------------------------

RNAV (GPS) Y RWY 17L

SACRAMENTO INTL (SMF)

RNP APCH - GPS.	<p>⚠ Circling NA west of Rwy 17L-35R. Simultaneous approach authorized. LNAV procedure NA during simultaneous operations. Use of FD or AP required during simultaneous operations. For uncompensated Baro-VNAV systems, LNAV/VNAV NA below -4°C or above 54°C. For inop ALS, increase LNAV/VNAV all Cats visibility to RVR 4000 and LNAV C/D visibility to RVR 5500.</p>	MALSR 	MISSED APPROACH: Climb to 500 then climbing left turn to 3000 direct ORRCA and hold.

D-ATIS 126.75	NORCAL APP CON 125.4 259.1 (W-NE) 127.4 317.5 (E-SE)	CAPITOL TOWER 125.7 256.7	GND CON 121.7 256.7	CLNC DEL 121.1 256.7	CPDLC
-------------------------	--	-------------------------------------	-------------------------------	--------------------------------	-------



CATEGORY	A	B	C	D
LPV DA		227/18	200 (200-½)	
LNAV/VNAV DA		277/24	250 (300-½)	
LNAV MDA	380/24	353 (400-½)	380/30	353 (400-¾)
C CIRCLING	400-1 373 (400-1)	480-1 453 (500-1)	480-1½ 453 (500-1½)	840-2¾ 813 (900-2¾)