

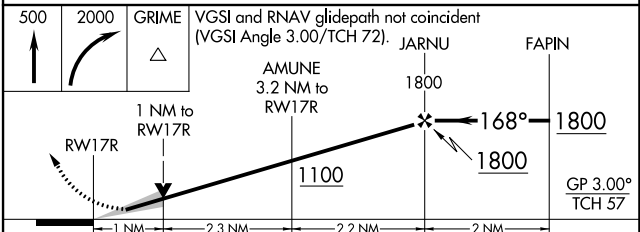
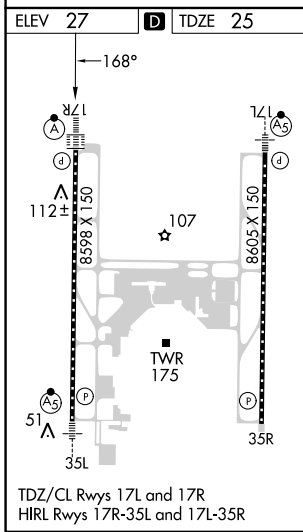
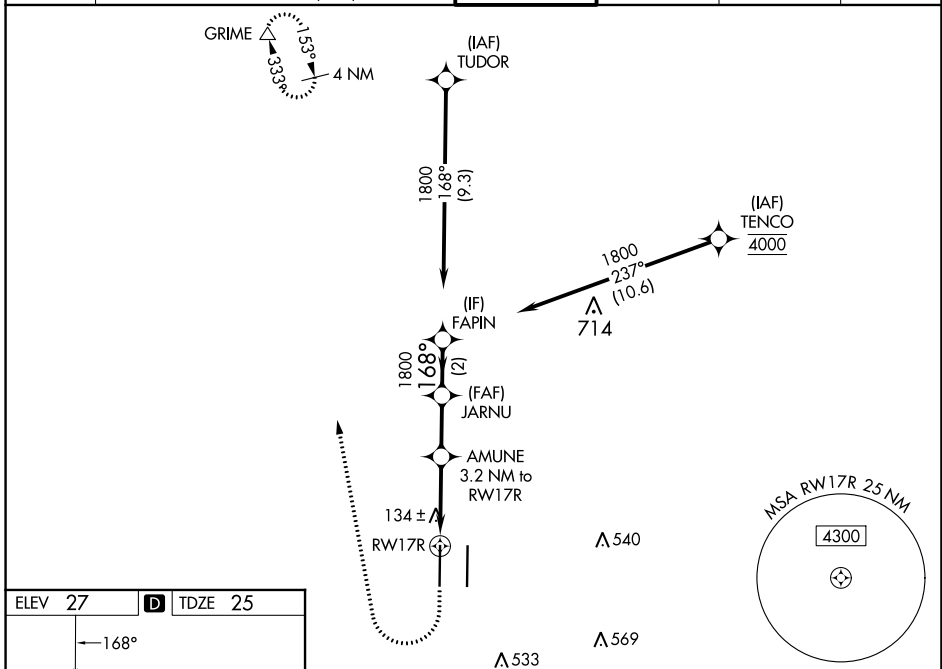
WAAS CH 65728 W17A	APP CRS 168°	Rwy ldg TDZE Apt Elev	8598 25 27
--	------------------------	-----------------------------	---------------------------------------

RNAV (GPS) Y RWY 17R

SACRAMENTO INTL (SMF)

RNP APCH - GPS.	<p>ALSF-2</p>	MISSED APPROACH: Climb to 500 then climbing right turn to 2000 direct GRIME and hold.
<p>▼ Circling NA east of Rwy 17R-35L. Simultaneous approach authorized. Use of FD or AP required during simultaneous operations. LNAV procedure NA during simultaneous operations. For uncompensated Baro-VNAV systems, LNAV/VNAV NA below -4°C or above 54°C. For inop ALS, increase LNAV/VNAV all Cats visibility to RVR 4500 and LNAV all Cats visibility to RVR 5500.</p>		

D-ATIS 126.75	NORCAL APP CON 125.4 259.1 (W-NE) 125.25 257.9 (SW) 127.4 317.5 (E-SE)	CAPITOL TOWER 125.7 256.7	GND CON 121.7 256.7	CLNC DEL 121.1 256.7	CPDLC
-------------------------	--	-------------------------------------	-------------------------------	--------------------------------	-------



CATEGORY	A	B	C	D
LPV DA		225/18	200 (200-½)	
LNAV/VNAV DA		323/24	298 (300-½)	
LNAV MDA	400/24	375 (400-½)	400/35	375 (400-¾)
<input checked="" type="checkbox"/> CIRCLING	440-1 413 (500-1)	480-1 453 (500-1)	480-1½ 453 (500-1½)	580-2 553 (600-2)

SW-2, 16 MAY 2024 to 13 JUN 2024

SW-2, 16 MAY 2024 to 13 JUN 2024