

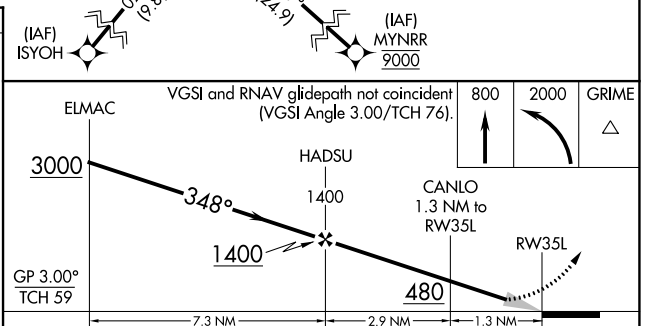
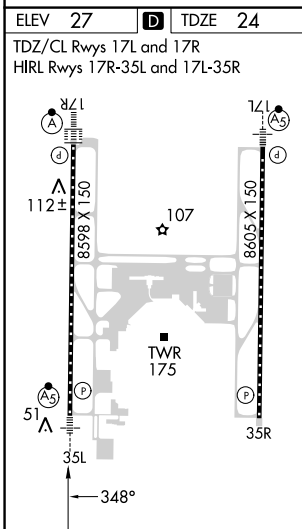
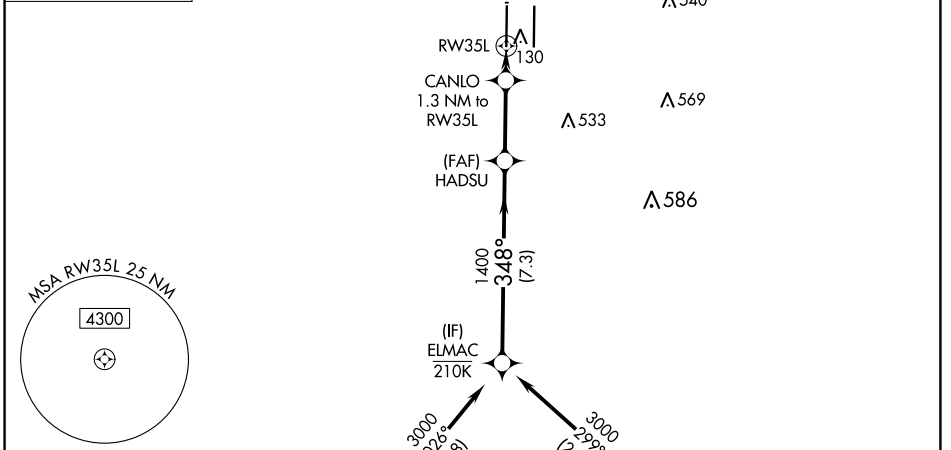
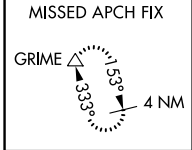
WAAS CH 86602 W35A	APP CRS 348°	Rwy Idg TDZE Apt Elev	8598 24 27
--	------------------------	-----------------------------	---------------------------------------

RNAV (GPS) Y RWY 35L

SACRAMENTO INTL (SMF)

RNP APCH-GPS.		MALSRR	MISSED APPROACH: Climb to 800 then climbing left turn to 2000 direct GRIME and hold.
⚠ Circling NA east of Rwy 17R-35L. For uncompensated Baro-VNAV systems, LNAV/VNAV NA below -2°C or above 54°C. For inop ALS, increase LNAV/VNAV all Cats visibility to RVR 4500 and increase LNAV Cat C/D visibility to RVR 5500. *RVR 1800 authorized with use of FD or AP or HUD to DA.			

D-ATIS 126.75	NORCAL APP CON 125.4 259.1 (W-NE) 125.25 257.9 (SW) 127.4 317.5 (E-SE)	CAPITOL TOWER 125.7 256.7	GND CON 121.7 256.7	CLNC DEL 121.1 256.7	CPDLC
-------------------------	---	-------------------------------------	-------------------------------	--------------------------------	-------



CATEGORY	A	B	C	D
LPV DA*		224/24	200 (200-½)	
LNAV/VNAV DA		311/24	287 (300-½)	
LNAV MDA	380/24	356 (400-½)	380/30	356 (400-⅝)
C CIRCLING	440-1 413 (500-1)	480-1 453 (500-1)	480-1½ 453 (500-1½)	580-2 553 (600-2)

SW-2, 16 MAY 2024 to 13 JUN 2024

SW-2, 16 MAY 2024 to 13 JUN 2024