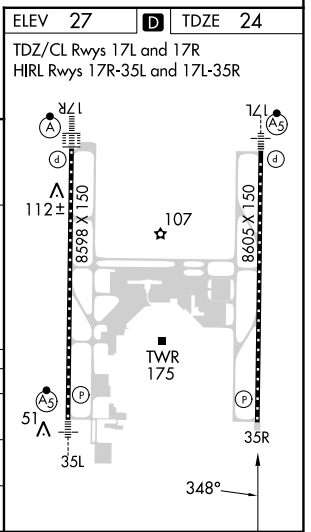
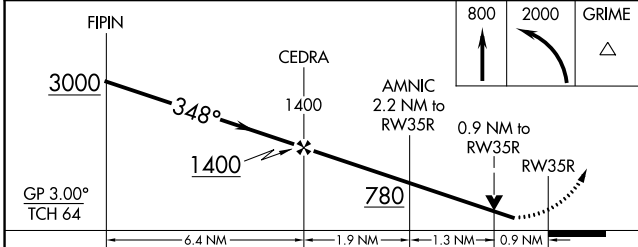
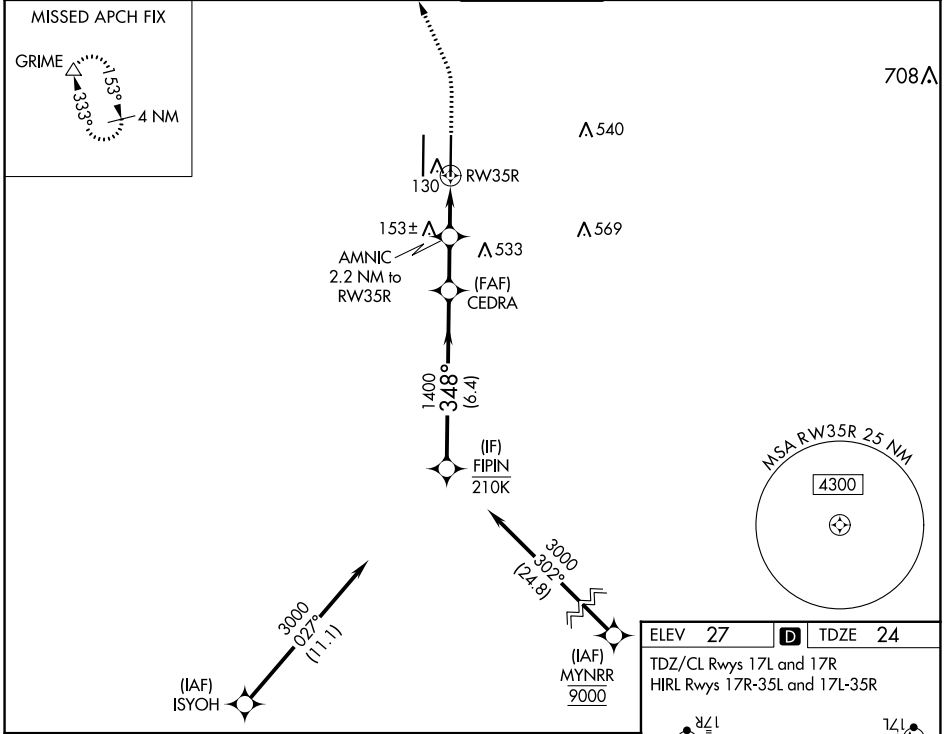


# RNAV (GPS) Y RWY 35R

SACRAMENTO INTL (SMF)

APP CRS	Rwy Idg	<b>8605</b>
<b>348°</b>	TDZE	<b>24</b>
	Apt Elev	<b>27</b>

RNP APCH-GPS.		MISSED APPROACH: Climb to 800 then climbing left turn to 2000 direct GRIME and hold.	
<p><b>▼</b> Circling NA west of Rwy 17L-35R. Rwy 35R helicopter visibility reduction below 3/4 SM NA. For uncompensated Baro-VNAV systems, LNAV/VNAV NA below -2°C or above 54°C.</p>			
D-ATIS	NORCAL APP CON	CAPITOL TOWER	GND CON
<b>126.75</b>	<b>125.4 259.1 (W-NE) 125.25 257.9 (SW) 127.4 317.5 (E-SE)</b>	<b>125.7 256.7</b>	<b>121.7 256.7</b>
		CLNC DEL	CPDLC
		<b>121.1 256.7</b>	



CATEGORY	A	B	C	D
LNAV/VNAV DA		311/45	287 (300-7%)	
LNAV MDA		380/55	356 (400-1)	
<b>C</b> CIRCLING	400-1 373 (400-1)	480-1 453 (500-1)	480-1½ 453 (500-1½)	840-2¾ 813 (900-2¾)

SW-2, 16 MAY 2024 to 13 JUN 2024

SW-2, 16 MAY 2024 to 13 JUN 2024