

APP CRS	Rwy Idg	4300
281°	TDZE	1934
	Apt Elev	1934

RNAV (GPS) RWY 28

ST MARYS MUNI (OYM)

RNP APCH - GPS.

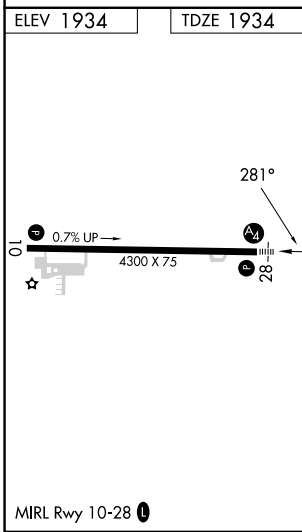
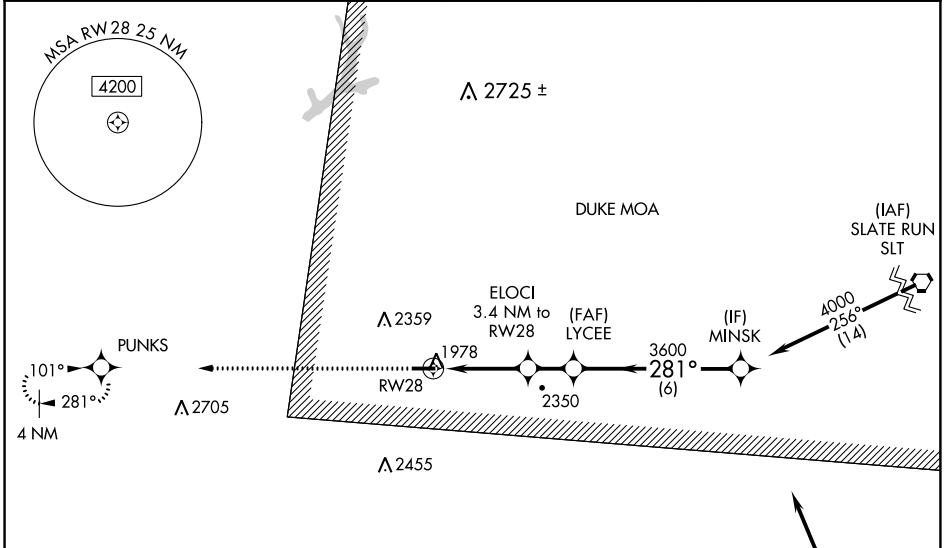
⚠ Rwy 28 helicopter visibility reduction below 3/4 SM NA. Inop table does not apply to LNAV Cat A. VDP NA when using Bradford altimeter setting. When local altimeter setting not received, use Bradford altimeter setting and increase all MDA 240 feet, LNAV visibility Cats B/C/D 1/2 SM, and Circling visibility Cats B/C 1/2 SM. For inop ALS increase LNAV visibility Cat C/D to 2 1/2 SM. For inop ALS when using Bradford altimeter setting, increase LNAV visibility Cat C/D to 3 SM.

⚠ -36°C

MALS

MISSED APPROACH:
Climb to 4000 direct PUNKS and hold.

AWOS-3P 118.05	CLEVELAND CENTER 126.725 291.65	ALTOONA CLNC DEL 122.4	UNICOM 122.7 (CTAF) 0
--------------------------	---	----------------------------------	---------------------------------



CATEGORY	A	B	C	D
LNAV MDA	2760-1	826 (900-1)	2760-2	826 (900-2)
CIRCLING	2760-1 1/4	826 (900-1 1/4)	2760-2 1/2 826 (900-2 1/2)	2840-3 906 (1000-3)

NE-4, 16 MAY 2024 to 13 JUN 2024

NE-4, 16 MAY 2024 to 13 JUN 2024