

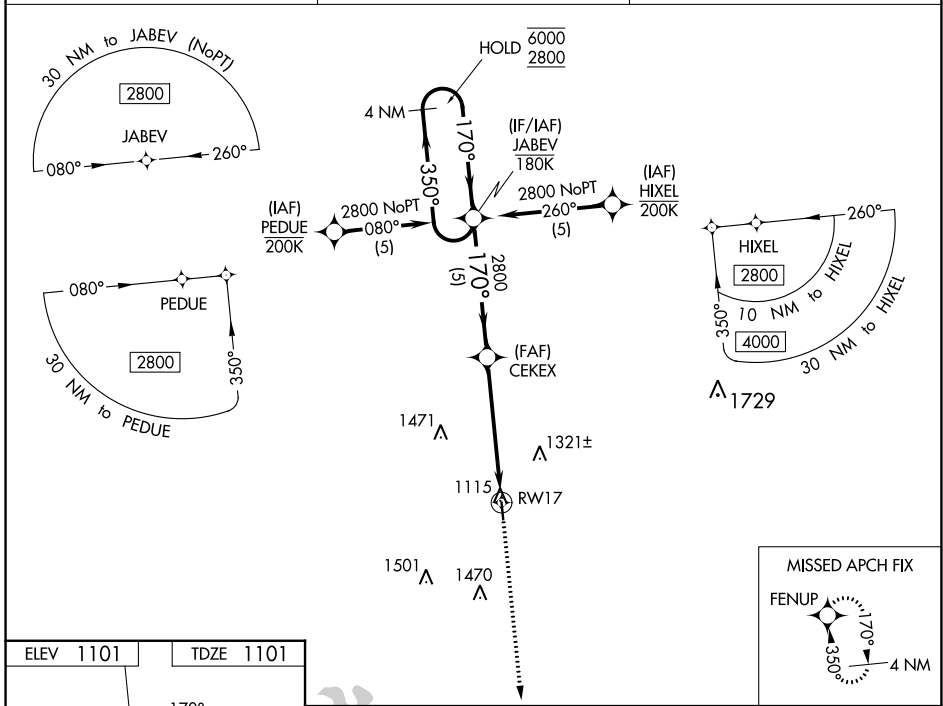
WAAS CH 99741 W17A	APP CRS 170°	Rwy ldg TDZE Apt Elev	3603 1101 1101
--	------------------------	-----------------------------	---

RNAV (GPS) RWY 17

BOWIE MUNI (ØF2)

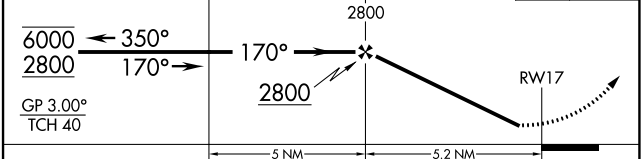
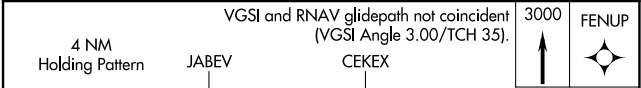
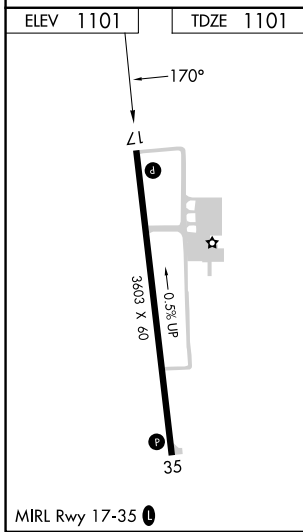
RNP APCH	MISSED APPROACH: Climb to 3000 direct FENUP and hold.
▽ Rwy 17 helicopter visibility reduction below 1 SM NA. ▲ For uncompensated Baro-VNAV systems, LNAV/VNAV NA below -17° C or above 54° C.	

AWOS-3PT 118.75	FORT WORTH CENTER 127.95 322.325	UNICOM 122.8 (CTAF) 0
---------------------------	--	---------------------------------



SC-2, 16 MAY 2024 to 13 JUN 2024

SC-2, 16 MAY 2024 to 13 JUN 2024



CATEGORY	A	B	C	D
LPV DA	1351-1	250 (300-1)		NA
LNAV/VNAV DA	1546-1 ³ / ₈	445 (500-1 ³ / ₈)		NA
LNAV MDA	1640-1	539 (600-1)	1640-1 ³ / ₈ 539 (600-1 ³ / ₈)	NA
C CIRCLING	1640-1 539 (600-1)	1680-1 579 (600-1)	1860-2 ¹ / ₄ 759 (800-2 ¹ / ₄)	NA