

(HOWE4.HHOWE) 24137

HHOWE FOUR DEPARTURE (RNAV) AL-5642 (FAA)

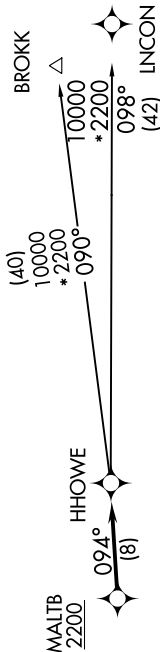
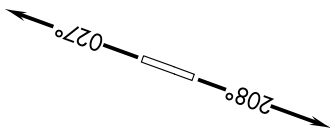
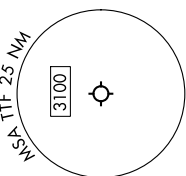
CUSTER (TTF)
MONROE, MICHIGAN

EC-1, 16 MAY 2024 to 13 JUN 2024

**TOP ALTITUDE:
ASSIGNED BY ATC**

RNAV-1 DME/DME/IRU or GPS.
RADAR required.

DETROIT DEP CON
134.3 284.0
AWOS-3
119.075
CTAF
122.7



NOTE: Turbojet departures at/above 10000, maintain 280K until advised by ATC.
NOTE: BROKK TRANSITION: For use by flights filed at or below FL270, or as assigned by ATC.

TAKEOFF MINIMUMS:
Rwy 3, 21: Standard.

NOTE: Chart not to scale.

DEPARTURE ROUTE DESCRIPTION

TAKEOFF RUNWAY 3: Climb on heading 027° or as assigned by ATC, thence....
TAKEOFF RUNWAY 21: Climb on heading 208° or as assigned by ATC, thence....

....for RADAR vectors to cross MALTB at or above 2200, then on track 094° to HOWE, then on (transition). Maintain ATC assigned altitude, expect filed altitude 10 minutes after departure.

BROKK TRANSITION (HOWE4, BROKK):
INCON TRANSITION (HOWE4, INCON):

HHOWE FOUR DEPARTURE (RNAV)
(HOWE4.HHOWE) 16MAY24

MONROE, MICHIGAN
CUSTER (TTF)

EC-1, 16 MAY 2024 to 13 JUN 2024