

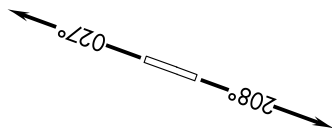
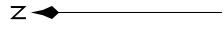
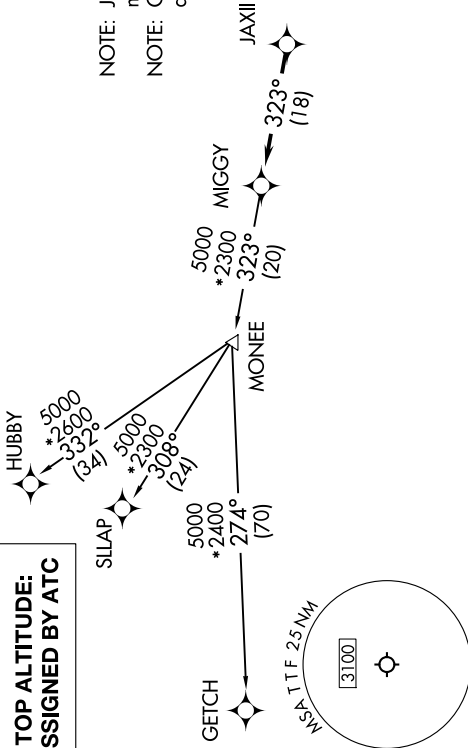
EC-1, 16 MAY 2024 to 13 JUN 2024

AWOS-3
119.075
CTAF
122.7
DETROIT DEP CON
134.3 284.0

RNAV 1 - DME/DME/IRU or GPS.
RADAR required.

NOTE: Jet departures at/above 10000, maintain 280K until advised by ATC.
NOTE: GETCH TRANSITION: For use by KMKE area arrivals only, or as assigned by ATC.

TAKEOFF MINIMUMS:
Rwys 3, 21 : Standard.



NOTE: Chart not to scale.

DEPARTURE ROUTE DESCRIPTION

TAKEOFF RUNWAY 3: Climb on heading 027° or as assigned by ATC, thence....
TAKEOFF RUNWAY 21: Climb on heading 208° or as assigned by ATC, thence....
for RADAR vectors to JAXII, then on track 323° to MIGGY, then on (transition). Maintain 17000 or as assigned by ATC, expect filed altitude 10 minutes after departure.

GETCH TRANSITION (MIGGY3 GETCH):
HUBBY TRANSITION (MIGGY3 HUBBY):
SLLAP TRANSITION (MIGGY3 SLLAP):

EC-1, 16 MAY 2024 to 13 JUN 2024