

(ZETTR4.ZETTR) 24137

# ZETTR FOUR DEPARTURE (RNAV)

AL-5642 (FAA)

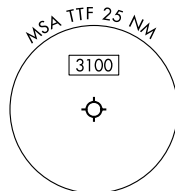
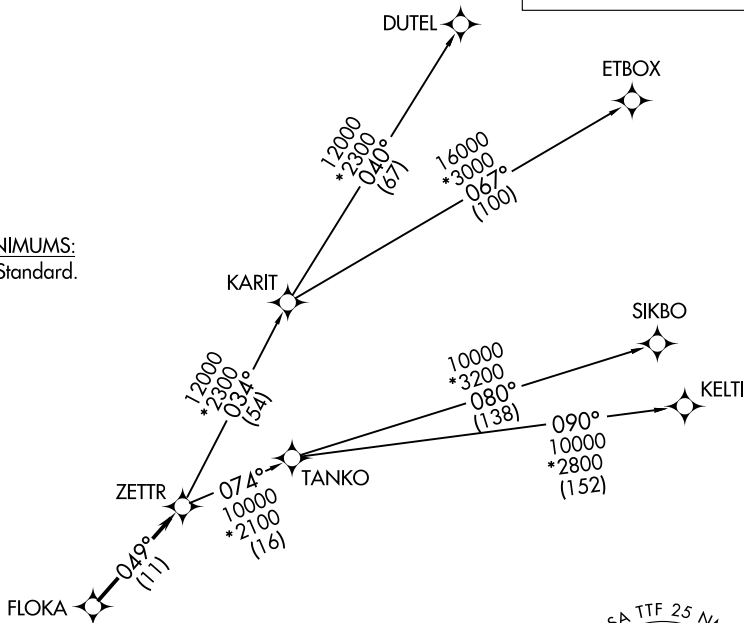
CUSTER (TTF)  
MONROE, MICHIGAN

DETROIT DEP CON  
134.3 284.0  
AWOS-3  
119.075  
CTAF  
122.7

RNAV 1 - DME/DME/IRU or GPS.  
RADAR required.

**TOP ALTITUDE:  
ASSIGNED BY ATC**

**TAKEOFF MINIMUMS:**  
Rwys 3, 21: Standard.



## DEPARTURE ROUTE DESCRIPTION

**TAKEOFF RUNWAY 3:** Climb on heading 027° or as assigned by ATC, then...

**TAKEOFF RUNWAY 21:** Climb on heading 208° or as assigned by ATC, then...

...for RADAR vectors to FLOKA, then on track 049° to ZETTR, then on (transition). Maintain ATC assigned altitude, expect filed altitude 10 minutes after departure.

...for RADAR vectors to FLOKA, then on track 049° to ZETTR, then on (transition). Maintain ATC assigned altitude, expect filed altitude 10 minutes after departure.

**DUTEL TRANSITION (ZETTR4.DUTEL):**

**ETBOX TRANSITION (ZETTR4.ETBOX):**

**KELTI TRANSITION (ZETTR4.KELTI):**

**SIKBO TRANSITION (ZETTR4.SIKBO):**

**TANKO TRANSITION (ZETTR4.TANKO):**

NOTE: Turbojet departures at/above 10000, maintain 280K until advised by ATC.

NOTE: TANKO Transition: For use by CYYZ area arrivals only, or as assigned by ATC.

NOTE: Chart not to scale.

# ZETTR FOUR DEPARTURE (RNAV)

(ZETTR4.ZETTR) 16MAY24

MONROE, MICHIGAN  
CUSTER (TTF)

EC-1, 16 MAY 2024 to 13 JUN 2024

EC-1, 16 MAY 2024 to 13 JUN 2024