

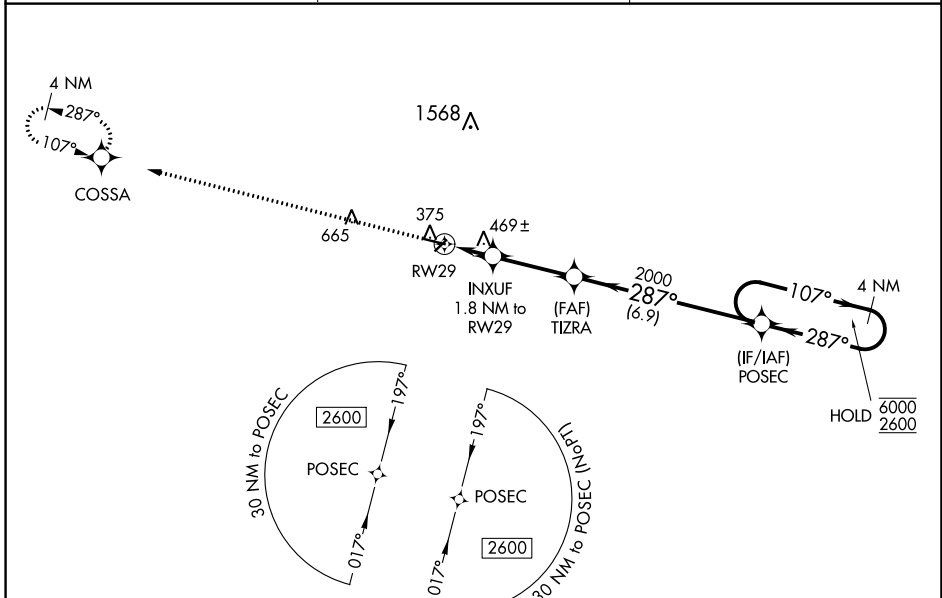
WAAS CH <b>86319</b> <b>W29A</b>	APP CRS <b>287°</b>	Rwy Idg TDZE Apt Elev	<b>4400</b> <b>358</b> <b>377</b>
--	------------------------	-----------------------------	---

# RNAV (GPS) RWY 29

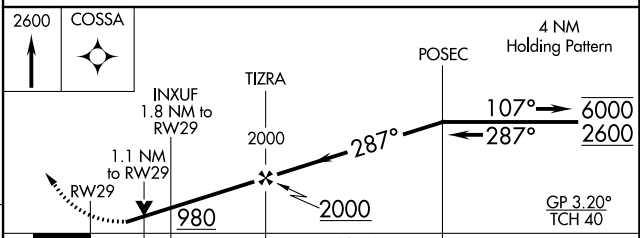
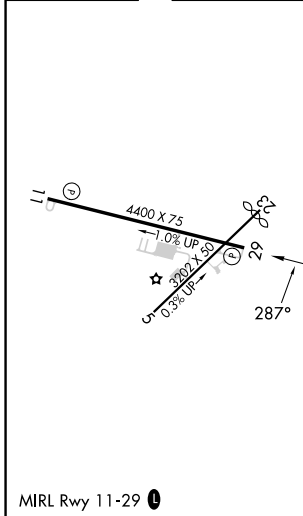
COCHRAN (48A)

RNP APCH - GPS.		MISSED APPROACH: Climb to 2600 direct COSSA and hold.
<p><b>⚠</b> Circling Rwy 5, 11 and 23 NA at night. Rwy 29 helicopter visibility reduction below <math>\frac{3}{4}</math> SM NA. For uncompensated Baro-VNAV systems, LNAV/VNAV NA below -15°C or above 54°C.</p>		

AWOS-3PT <b>120.975</b>	ATLANTA APP CON * <b>124.2 279.6</b>	UNICOM <b>122.8 (CTAF) 0</b>
----------------------------	---	---------------------------------



ELEV 377	<b>D</b>	TDZE 358
----------	----------	----------



CATEGORY	A	B	C	D
LPV DA		628-1	270 (300-1)	
LNAV/VNAV DA		608-1	250 (300-1)	
LNAV MDA		720-1	362 (400-1)	
<b>C</b> CIRCLING	820-1 443 (500-1)	860-1 483 (500-1)	980-1 $\frac{3}{4}$ 603 (700-1 $\frac{3}{4}$ )	980-2 603 (700-2)

SE-4, 16 MAY 2024 to 13 JUN 2024

SE-4, 16 MAY 2024 to 13 JUN 2024