

WAAS CH <b>69319</b> <b>W36A</b>	APP CRS <b>360°</b>	Rwy Idg <b>7004</b> TDZE <b>120</b> Apt Elev <b>126</b>
--	------------------------	---

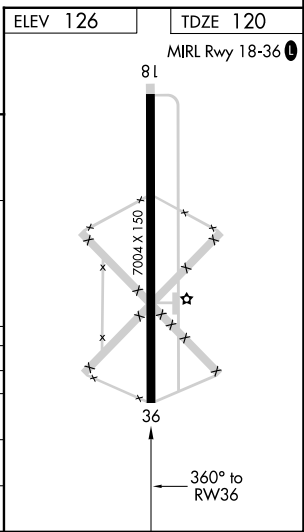
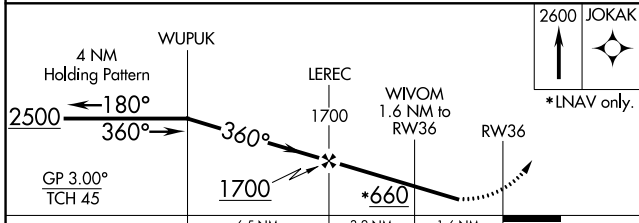
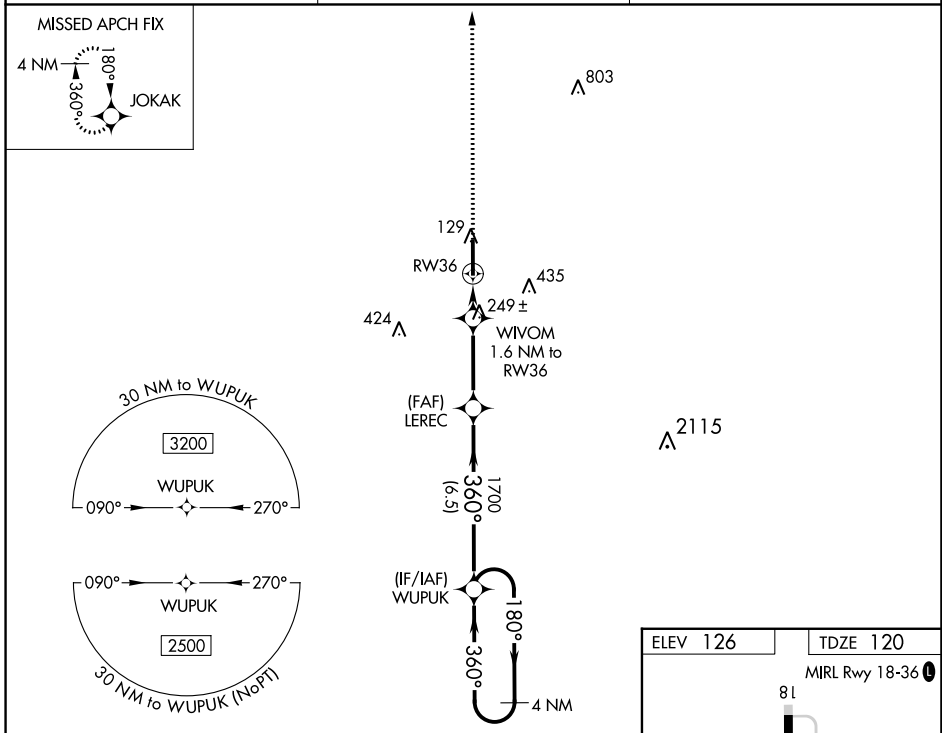
# RNAV (GPS) RWY 36

INDIANOLA MUNI (IDL)

**▼** Night landing: Rwy 18 NA. Baro-VNAV NA. DME/DME RNP-0.3 NA. Helicopter visibility reduction below  $\frac{3}{4}$  SM NA. Use Greenville altimeter setting, when not received, use Greenwood altimeter setting and increase LPV DA to 507 and all Cats visibility  $\frac{1}{8}$  SM, increase LNAV/VNAV DA to 465 and all Cats visibility  $\frac{1}{8}$  SM, increase all MDA 40 feet, increase LNAV Cat C/D and Circling Cat C/D visibility  $\frac{1}{4}$  SM.

**▲NA** MISSED APPROACH: Climb to 2600 direct JOKAK and hold.

GLH ASOS <b>125.525</b>	MEMPHIS CENTER <b>135.875 269.35</b>	UNICOM <b>122.8 (CTAF) 0</b>
----------------------------	---	---------------------------------



CATEGORY	A	B	C	D
LPV DA	470-1 $\frac{1}{8}$ 350 (400-1 $\frac{1}{8}$ )			
LNAV/VNAV DA	428-1 308 (400-1)			
LNAV MDA	540-1 420 (500-1)	540-1 $\frac{1}{8}$ 420 (500-1 $\frac{1}{8}$ )		
CIRCLING	580-1 454 (500-1)	600-1 474 (500-1)	840-2 714 (800-2)	840-2 $\frac{1}{4}$ 714 (800-2 $\frac{1}{4}$ )

SC-4, 16 MAY 2024 to 13 JUN 2024

SC-4, 16 MAY 2024 to 13 JUN 2024