

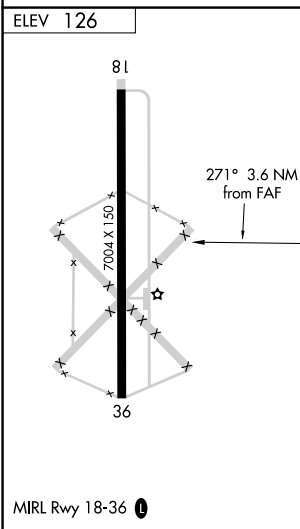
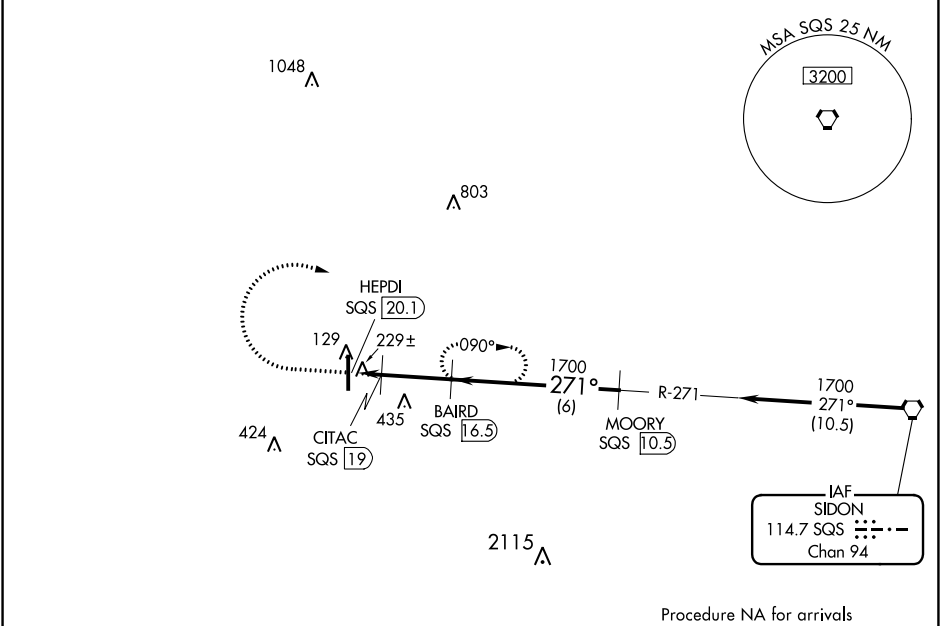
VORTAC SQS 114.7 Chan 94	APP CRS 271°	Rwy Idg TDZE Apt Elev	N/A N/A 126
--	------------------------	-----------------------------	--

VOR/DME-A
INDIANOLA MUNI (IDL)

NA Use Greenville altimeter setting, when not received, use Greenwood altimeter setting and increase all MDA 40 feet and Circling Cat C/D visibility ¼ SM. Circling to Rwy 18 NA at night. Helicopter visibility reduction below 1 SM NA.

MISSED APPROACH: Climb to 900, then climbing right turn to 1700 on SQS VORTAC R-271 to BAIRD/16.50 DME and hold.

GLH ASOS 125.525	MEMPHIS CENTER 135.875 269.35	UNICOM 122.8 (CTAF)
----------------------------	---	-------------------------------



	900	1700	BAIRD SQS 16.5	MOORY SQS 10.5
		SQS R-271		
			BAIRD SQS 16.5	MOORY SQS 10.5
				1700
				Procedure Turn NA
CATEGORY	A	B	C	D
CIRCLING	580-1 454 (500-1)	600-1 474 (500-1)	840-2 714 (800-2)	840-2¼ 714 (800-2¼)